

[View this email in your browser](#)

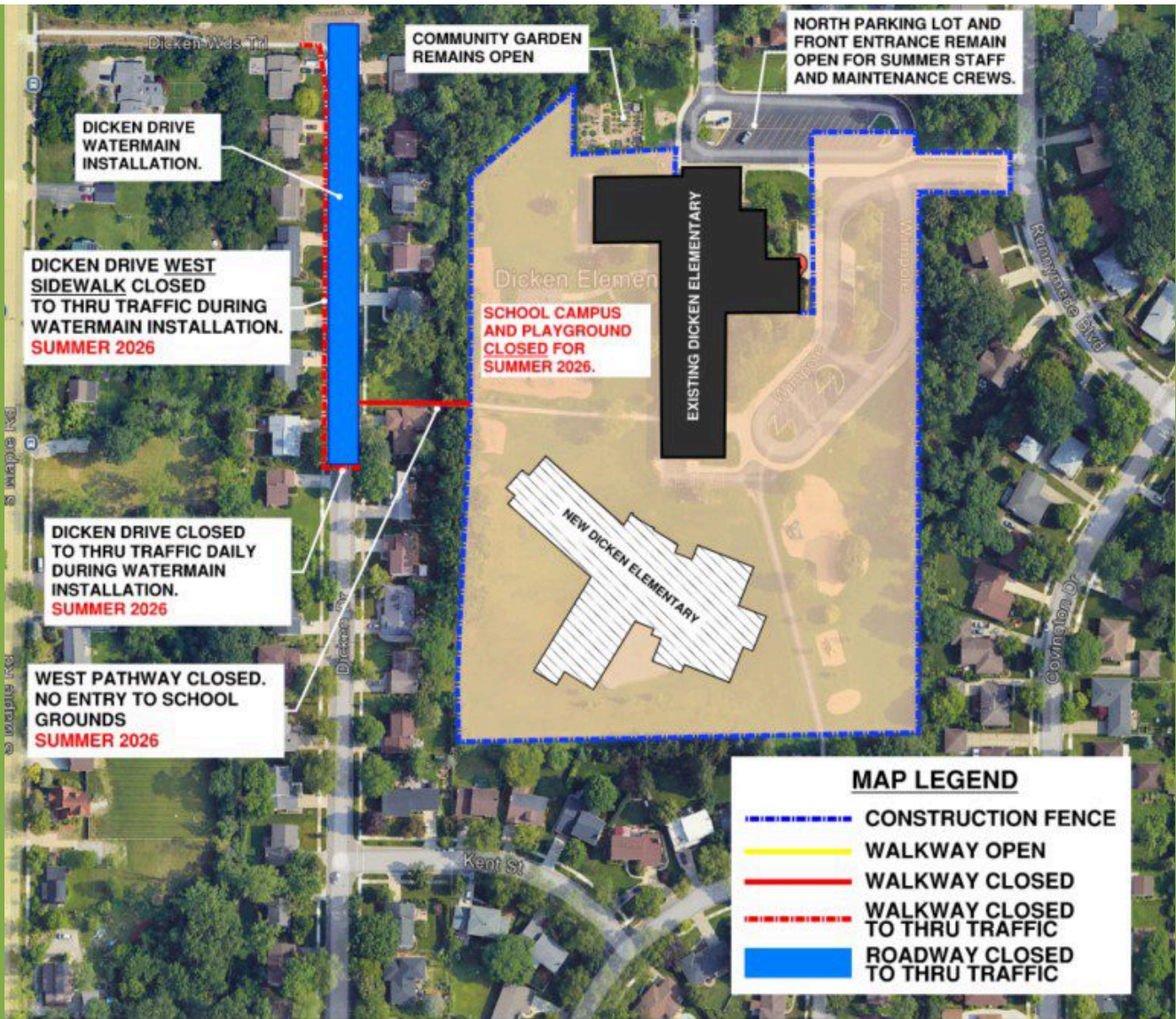


New Dicken Elementary School News - June 2026

To support construction of the new Dicken Elementary, the following activities will take place on campus, and are referenced on the site plan below. To see all of the information related to this project in one place, please **[click here to visit the New Dicken Elementary page](#)** and feel free to bookmark the page to revisit, as content will continue to be posted.

Current Work, Weather Permitting:

- Structural steel installation is scheduled to begin.
- Due to ongoing construction work, the entire Dicken Elementary School campus, including playgrounds, will be closed starting June 15th, for the duration of Summer.



NEW DICKEN ELEMENTARY SCHOOL SITE LOGISTICS SUMMER 2026

This new elementary school is made possible by Bond and Sinking Funds. Ann Arbor Public Schools wishes to thank the Community for the continued support of the Capital Program Bond and Sinking Funds.



AAPS Capital Program’s objective is to transform the student learning experience with the goal of providing for the health, safety, and well-being of all students in high-quality, equitable, and environmentally sustainable schools.

