

[View this email in your browser](#)

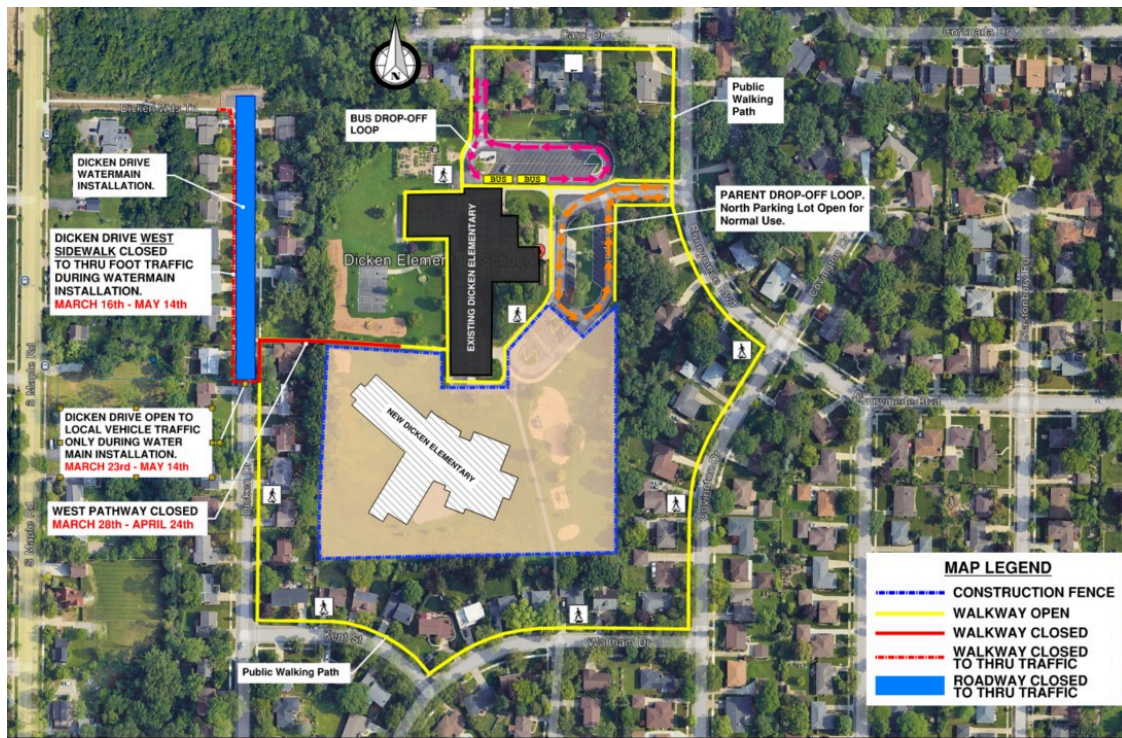


New Dicken Elementary School News - March 2026

To support construction of the new Dicken Elementary, the following activities will take place on campus, and are referenced on the site plan below. To see all of the information related to this project in one place, please [click here to visit the New Dicken Elementary page](#) and feel free to bookmark the page to revisit, as content will continue to be posted.

IMPORTANT STUDENT DROP-OFF & PICK-UP CHANGES - Starting April 6th:

- **All bus traffic will use the North lot from Carol Drive. No student drop-off or pick-up.**
 - See below in magenta dashed lines.
- **All student drop-off and pick-up will use the East lot (Main entrance) off Runnymede. Driveline will operate for all grades at this location.**
 - See below in orange dashes lines.
- **Both parking lots will be STAFF ONLY.**
- **Families will need to use the local residential streets if you wish to walk your child in, or for longer school visits (Ex. Volunteering in the classroom)**
- **During the school day between 9:00 am - 3:00 pm the front drive will only be available for a quick pick-up or drop-off. This is not intended to be a parking space. Please park on a residential street if you are at Dicken for more than 5 minutes.**
- **The west pathway from Dicken Drive will remain closed through late April and walkers should plan to enter from Runnymede. The East school sidewalks will reopen after Spring Break.**



NEW DICKEN ELEMENTARY SCHOOL SITE LOGISTICS PLAN - PHASE 4
APRIL 6th - JUNE 12th



Current Work, Weather Permitting:

- Foundation work is ongoing.
- Forming and setting elevator shafts.
- Water main utility work will continue, please see the changes below and maps during Spring Break and after Spring Break.
 - **Reminder:** Dicken Drive will remain open to local vehicle traffic only, while work continues through mid May.
 - **Spring Break Closure:** Water main utility work will close the entire East parking lot and sidewalks from March 28th through April 5th over Spring Break.

Please note:

- Construction parking and construction access drives are for construction personnel only and to ensure safety, staff and parents should refrain from using construction parking and/or drives.
- Emails will continue to be sent, to provide updates on campus activities.

This new elementary school is made possible by Bond and Sinking Funds. Ann Arbor Public Schools wishes to thank the Community for the continued support of the Capital Program Bond and Sinking Funds.

AAPS Capital Program's objective is to transform the student learning experience with the goal of providing for the health, safety, and well-being of all students in high-quality, equitable, and environmentally sustainable schools.

