



New Dicken Elementary School News - October 2025

To support construction of the new Dicken Elementary, the following activities will take place on campus, and are referenced on the site plan below. To see all of the information related to this project in one place, please [click here to visit the New Dicken Elementary page](#) and feel free to bookmark the page to revisit, as content will continue to be posted.

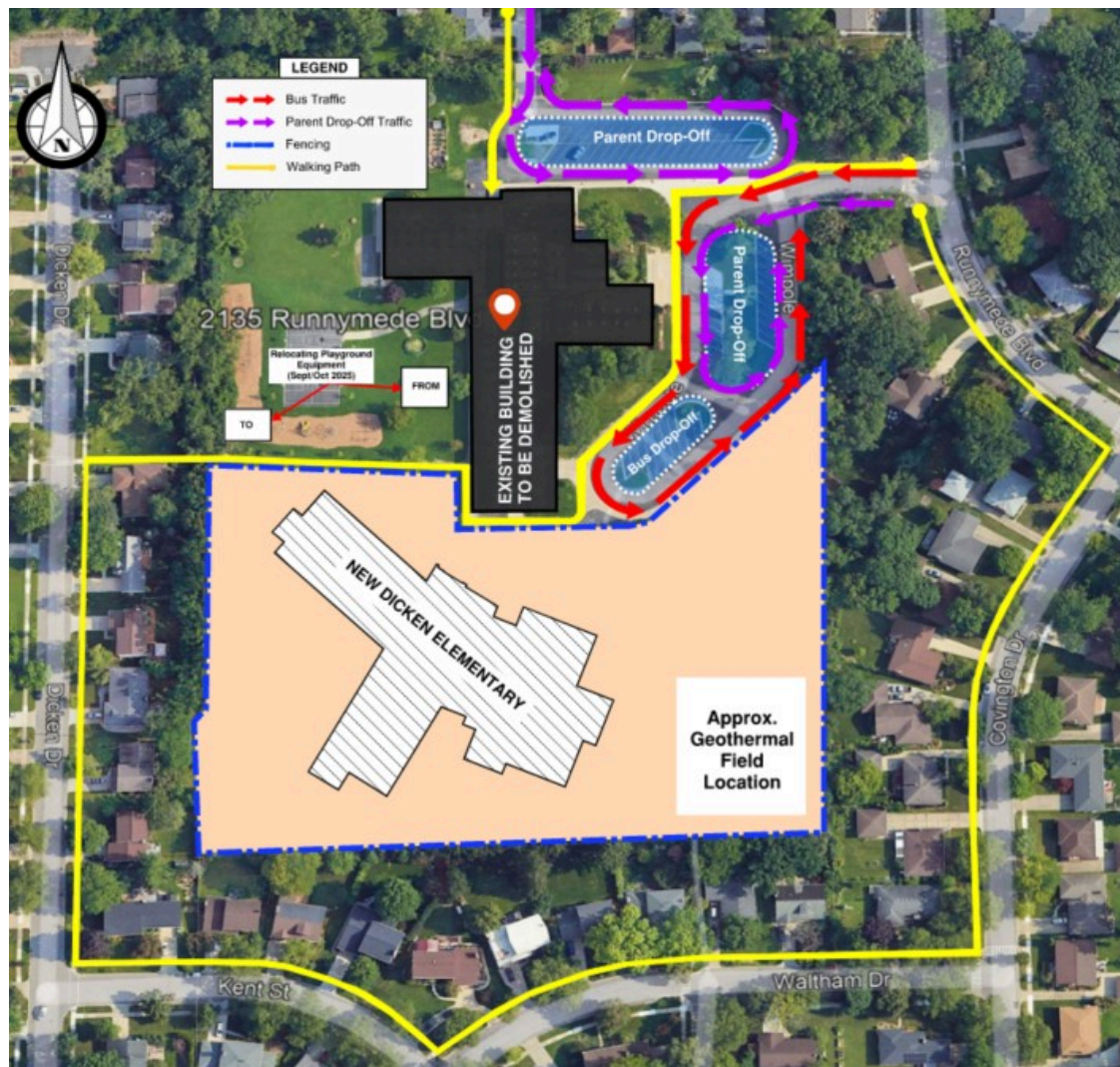
Updates for Existing Work, Weather Permitting:

- Excavating and forming/reinforcing for foundations is underway.
- The site grading for the new building is complete.
- Playground relocation is complete.
- Work on the Geothermal Heating, Cooling & Ventilation system continues with horizontal piping being installed.
 - Vertical drilling is completed and a reduction in volume is expected as the project continues with the next stage.
 - Crews typically operate from 7am to 7pm Monday through Saturday, within the City of Ann Arbor Noise Ordinance.



Please note:

- **For any parents/guardians providing a late drop off for their child (after 9:15am), please use the Carol Street entrance/lot.**
- The district has received inquiries regarding documented radon levels at existing schools, particularly those located adjacent to construction sites. More information regarding [AAPS radon monitoring](#) can be found on the [Capital Program website](#).
- Construction parking and construction access drives are for construction personnel only and to ensure safety, staff and parents should refrain from using construction parking and/or drives.
- Emails will continue to be sent, to provide updates on campus activities.



This new elementary school is made possible by Bond and Sinking Funds. Ann Arbor Public Schools wishes to thank the Community for the continued support of the Capital Program Bond and Sinking Funds.

AAPS Capital Program's objective is to transform the student learning experience with the goal of providing for the health, safety, and well-being of all students in high-quality, equitable, and environmentally sustainable schools.

