

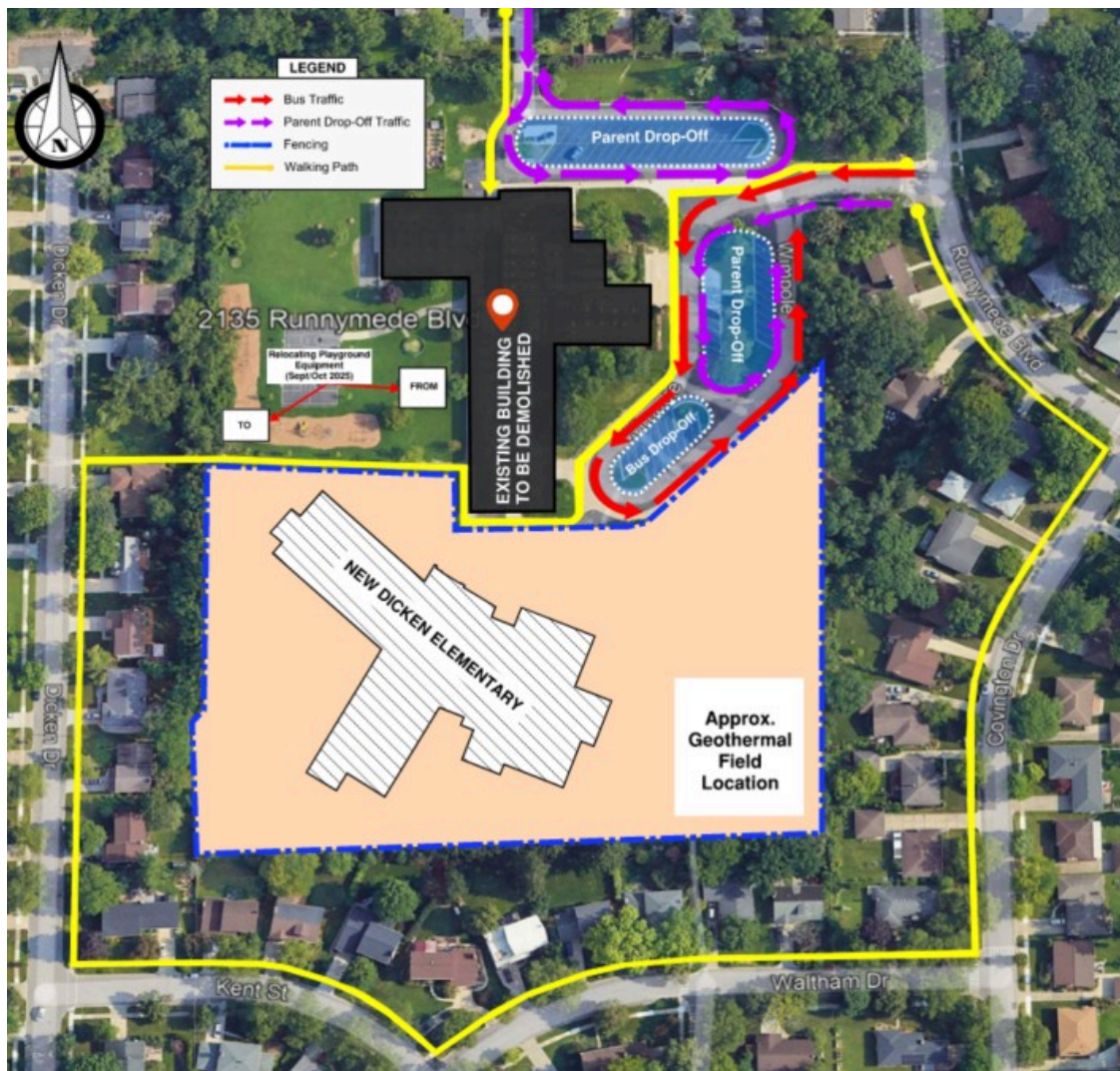


New Dicken Elementary School News - September 2025

To support construction of the new Dicken Elementary, the following activities will take place on campus, and are referenced on the site plan below. To see all of the information related to this project in one place, please [click here to visit the New Dicken Elementary page](#) and feel free to bookmark the page to revisit, as content will continue to be posted.

Updates for Existing Work, Weather Permitting:

- The site grading for the new building is complete.
- Excavating and forming/reinforcing for foundations is underway.
- Playground relocation is underway.
- Work on the Geothermal Heating, Cooling & Ventilation system continues and is expected to take about 3-4 more months.
 - Drilling crews typically operate from 7am to 7pm Monday through Saturday, within the City of Ann Arbor Noise Ordinance.



Please note:

- For any parents/guardians providing a late drop off for their child (after 9:15am), please use the Carol Street entrance/lot.
- Construction parking and construction access drives are for construction personnel only and to ensure safety, staff and parents should refrain from using construction parking and/or drives.
- Emails will continue to be sent, to provide updates on campus activities.



This new elementary school is made possible by Bond and Sinking Funds. Ann Arbor Public Schools wishes to thank the Community for the continued support of the Capital Program Bond and Sinking Funds.

AAPS Capital Program's objective is to transform the student learning experience with the goal of providing for the health, safety, and well-being of all students in high-quality, equitable, and environmentally sustainable schools.

