



New Logan ES @ Clague News - July 2025

To support construction of the new Logan Elementary, the following activities will take place on the Clague Middle School campus, and are referenced on the site plan below. To see all of the information related to this project in one place, please [click here visit to the New Logan Elementary page](#) and feel free to bookmark the page to revisit, as content will continue to be posted.

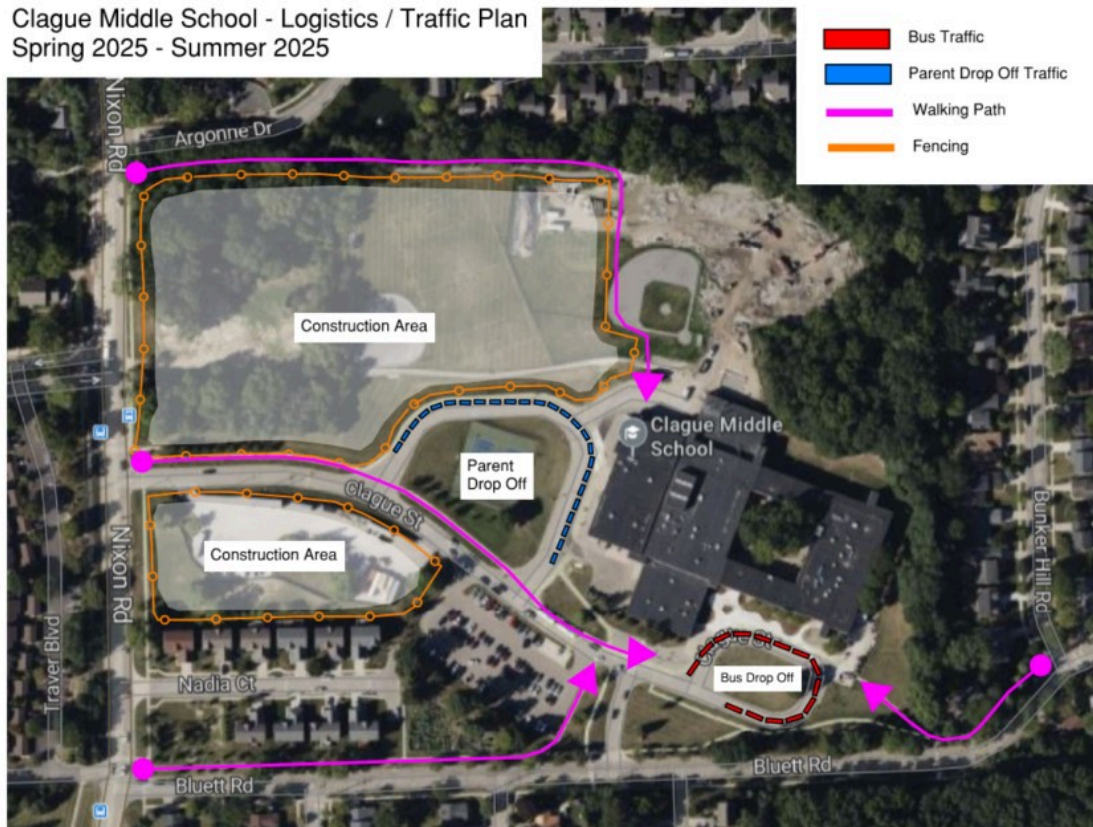
In Progress Activities, Weather Permitting:

- Installation of paved walkway connecting the Cougar Trail to Nixon Road.
- New utility work will begin.
- Relocate existing DTE power service.
- Site grading and excavating will begin for foundations.

Please note:

- Construction parking and construction access drives are for construction personnel only and to ensure safety, staff and parents should refrain from using construction parking and/or drives.
- Emails will continue to be sent, to provide updates on campus activities.

Clague Middle School - Logistics / Traffic Plan
Spring 2025 - Summer 2025



This new elementary school is made possible by Bond and Sinking Funds. Ann Arbor Public Schools wishes to thank the Community for the continued support of the Capital Program Bond and Sinking Funds.

AAPS Capital Program's objective is to transform the student learning experience with the goal of providing for the health, safety, and well-being of all students in high-quality, equitable, and environmentally sustainable schools.

