

ANN ARBOR PUBLIC SCHOOLS
LEAD. CARE. INSPIRE.



ANN ARBOR PUBLIC SCHOOLS

K5 Gathering Spaces
July 30, 2025

Agenda

- **Background**
- **K5 Gathering Spaces**
 - Cafes
 - Gyms
 - Hearts
- **K5 Specials Spaces**
- **Plans for Improvements at Middle Schools**

ANN ARBOR PUBLIC SCHOOLS
LEAD. CARE. INSPIRE.



Background

Background

Engagements during early planning for K5 Schools yielded an approach where whole-school Assemblies would occur in Gyms and half-school musical / theatrical / video events would occur in Cafes.

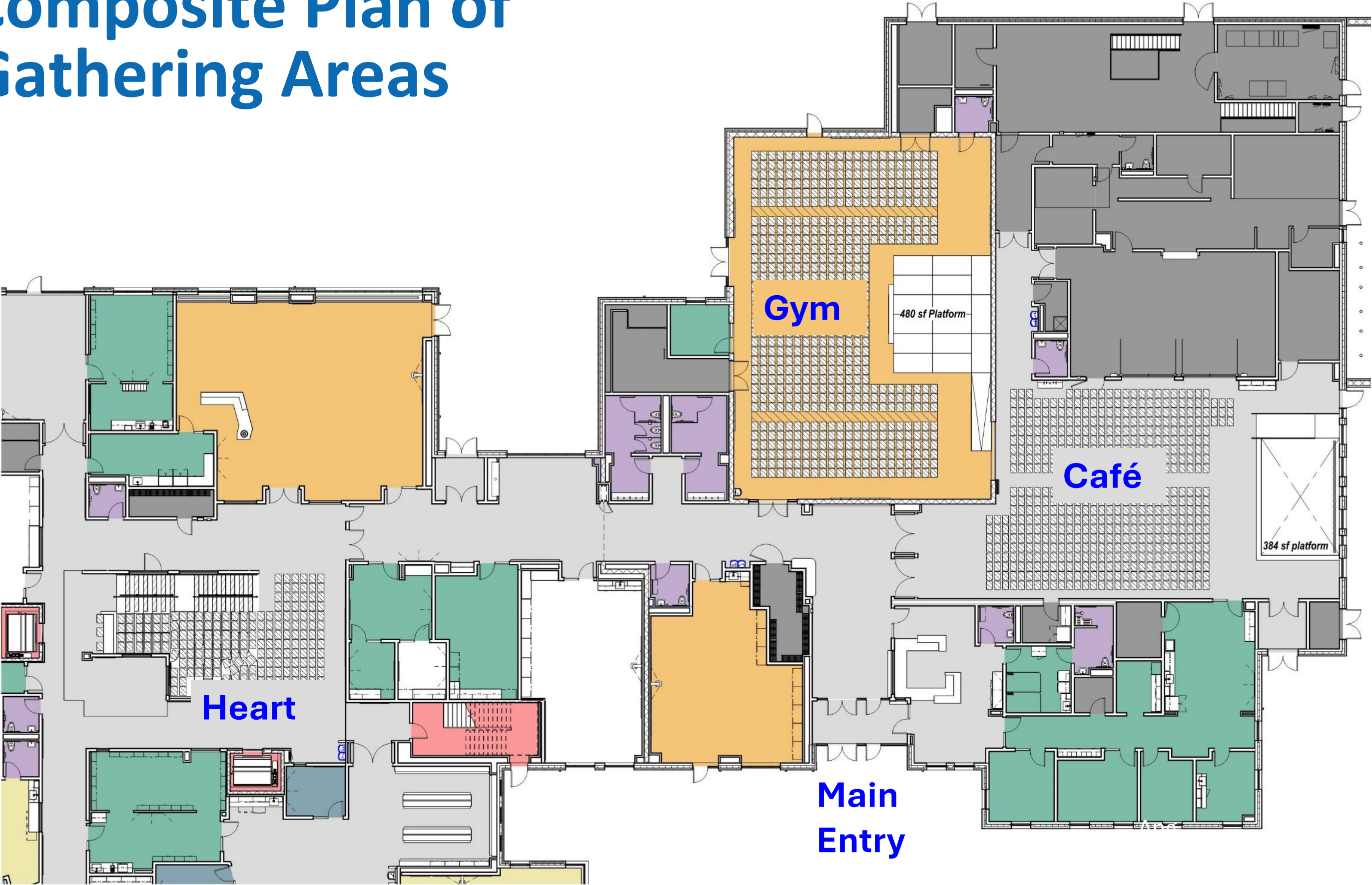
This presentation considers the conditions involved in accommodating whole-school gatherings in Cafes for music / theater / video presentations, using input from the AAPS's Music Department.

ANN ARBOR PUBLIC SCHOOLS
LEAD. CARE. INSPIRE.



K5 Gathering Spaces

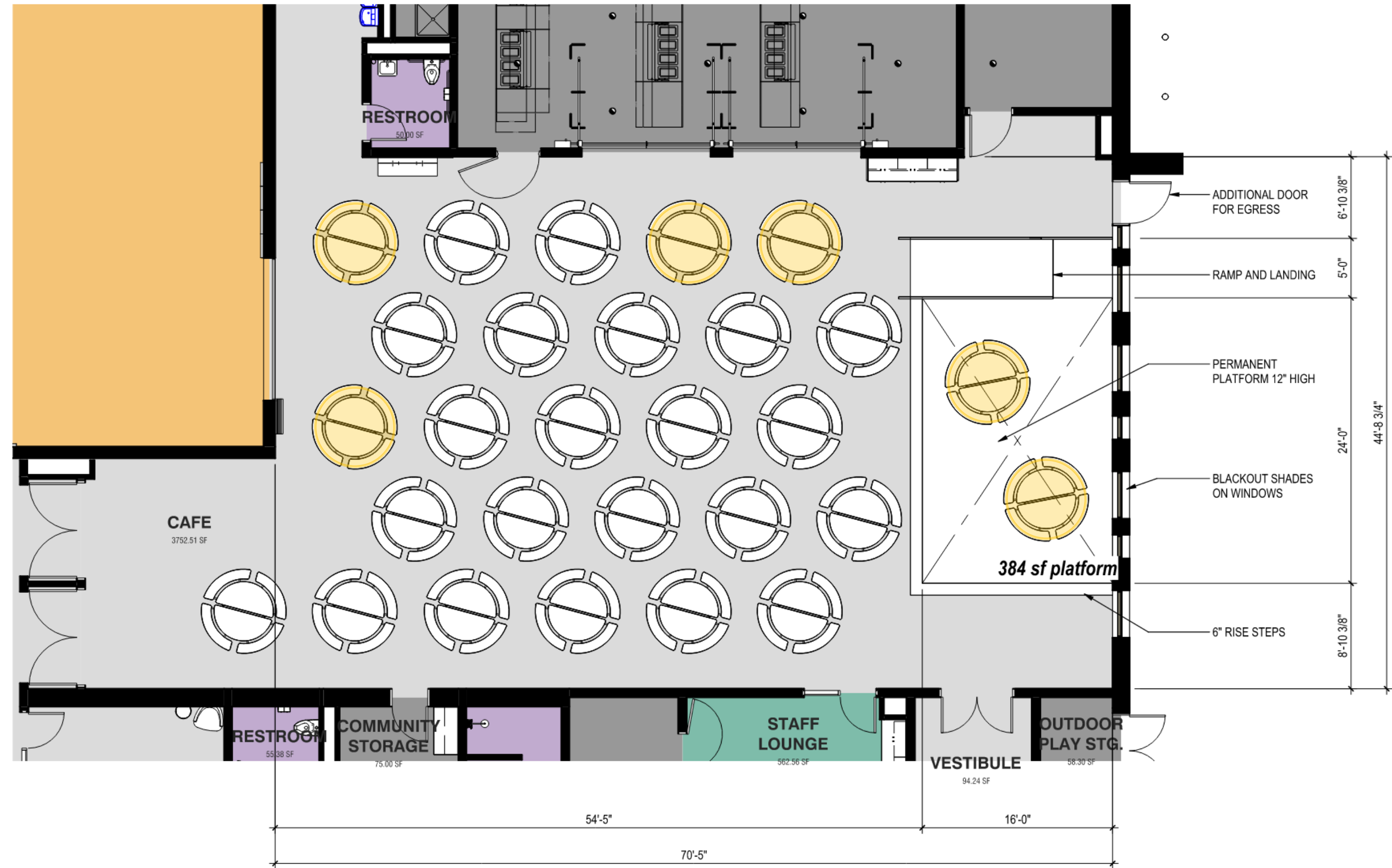
Composite Plan of Gathering Areas



This is a portion of the current Thurston floor plan showing the three main Gathering Areas common to these projects.



Café, Lunch Mode



Three lunch periods each accommodating 224 students equals a theoretical max. capacity of Capacity 672 students.

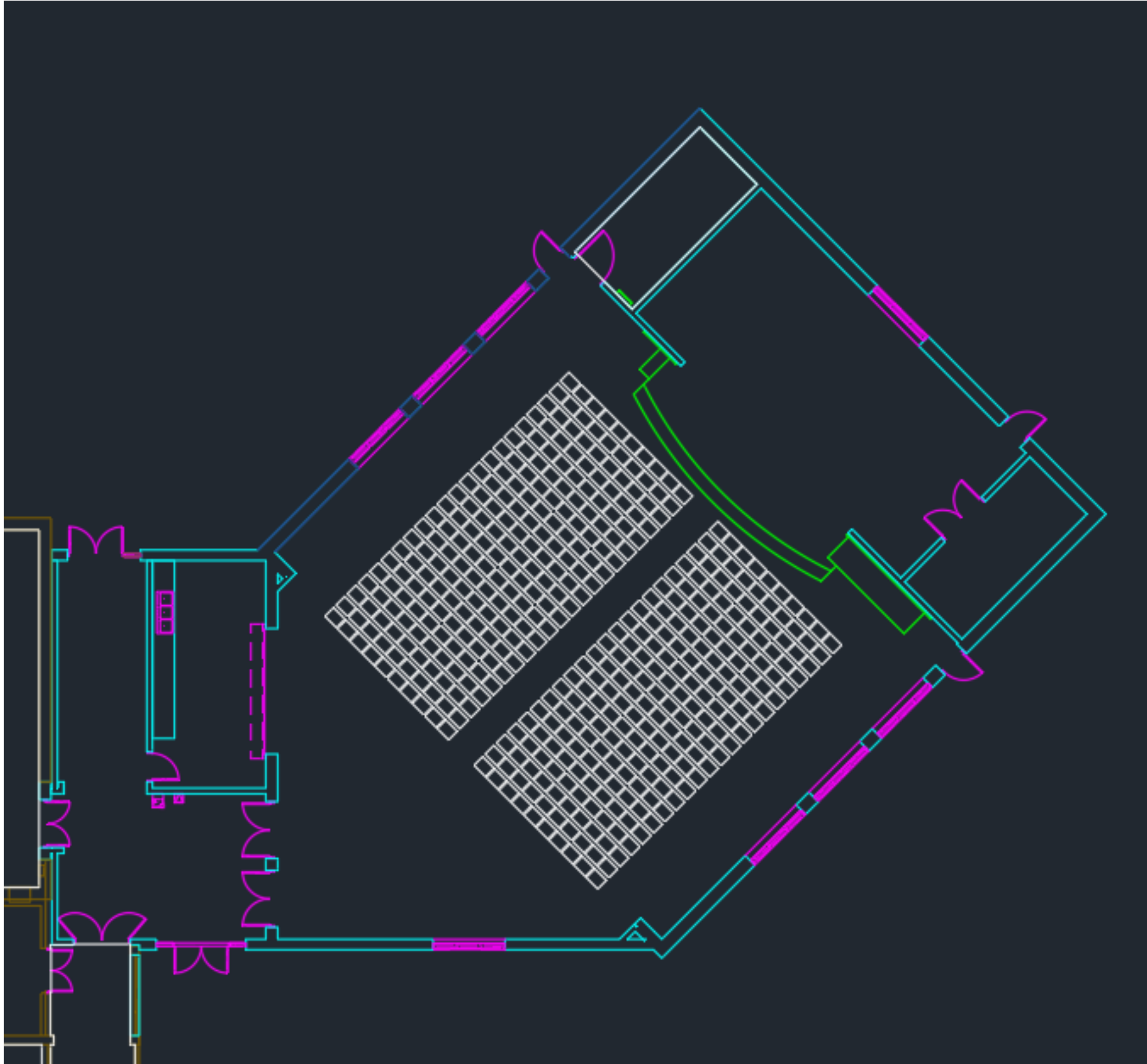
Highlighted tables are not needed if enrollment stays at or below 528 students.

Café, Lunch Mode



Students seated for Gatherings

The density of seated students shown here, which is used in the following sketches, is taken from Thurston's recent Groundbreaking Ceremony.



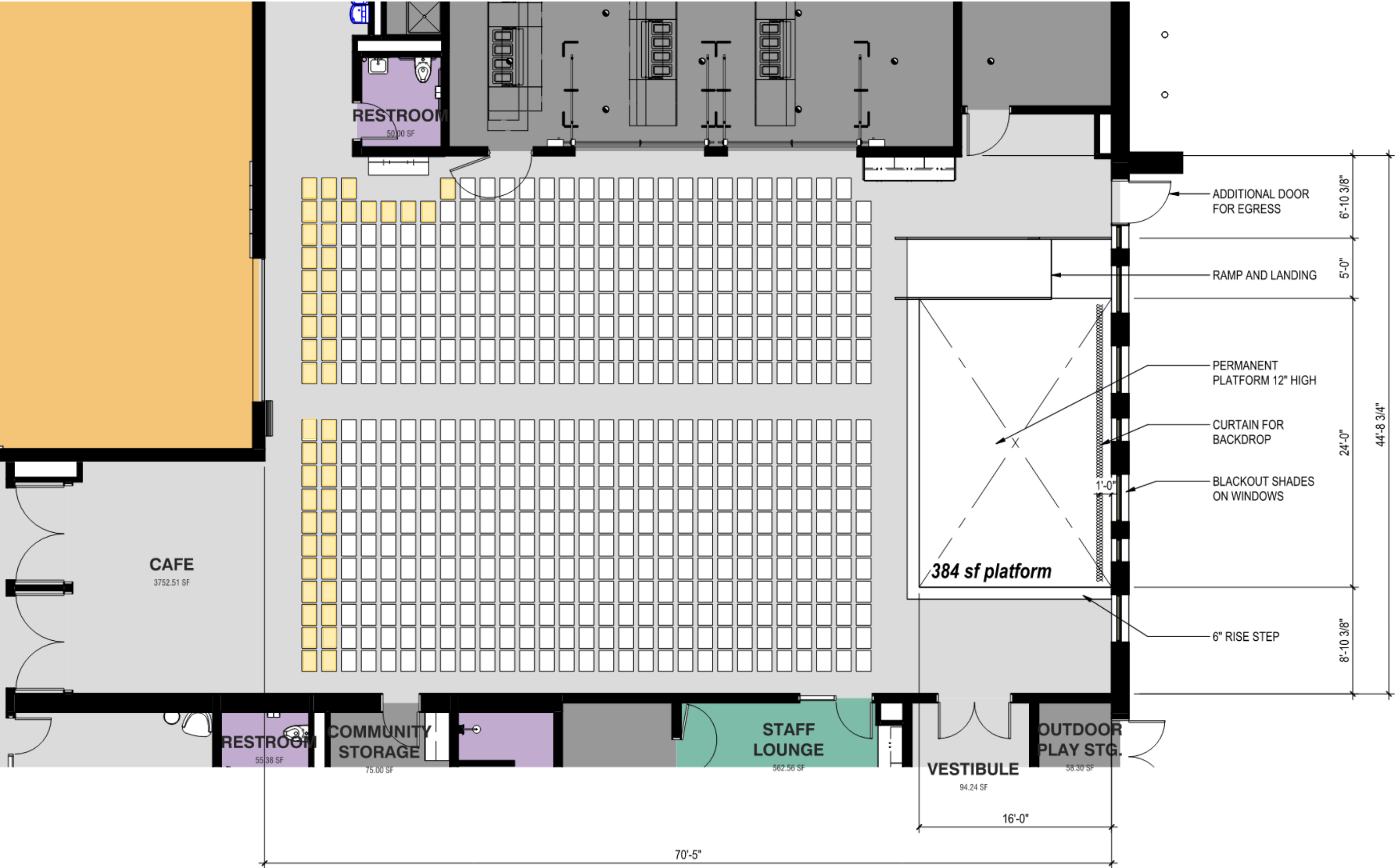
440



Thurston's Groundbreaking Ceremony



Café, Gathering Mode 1

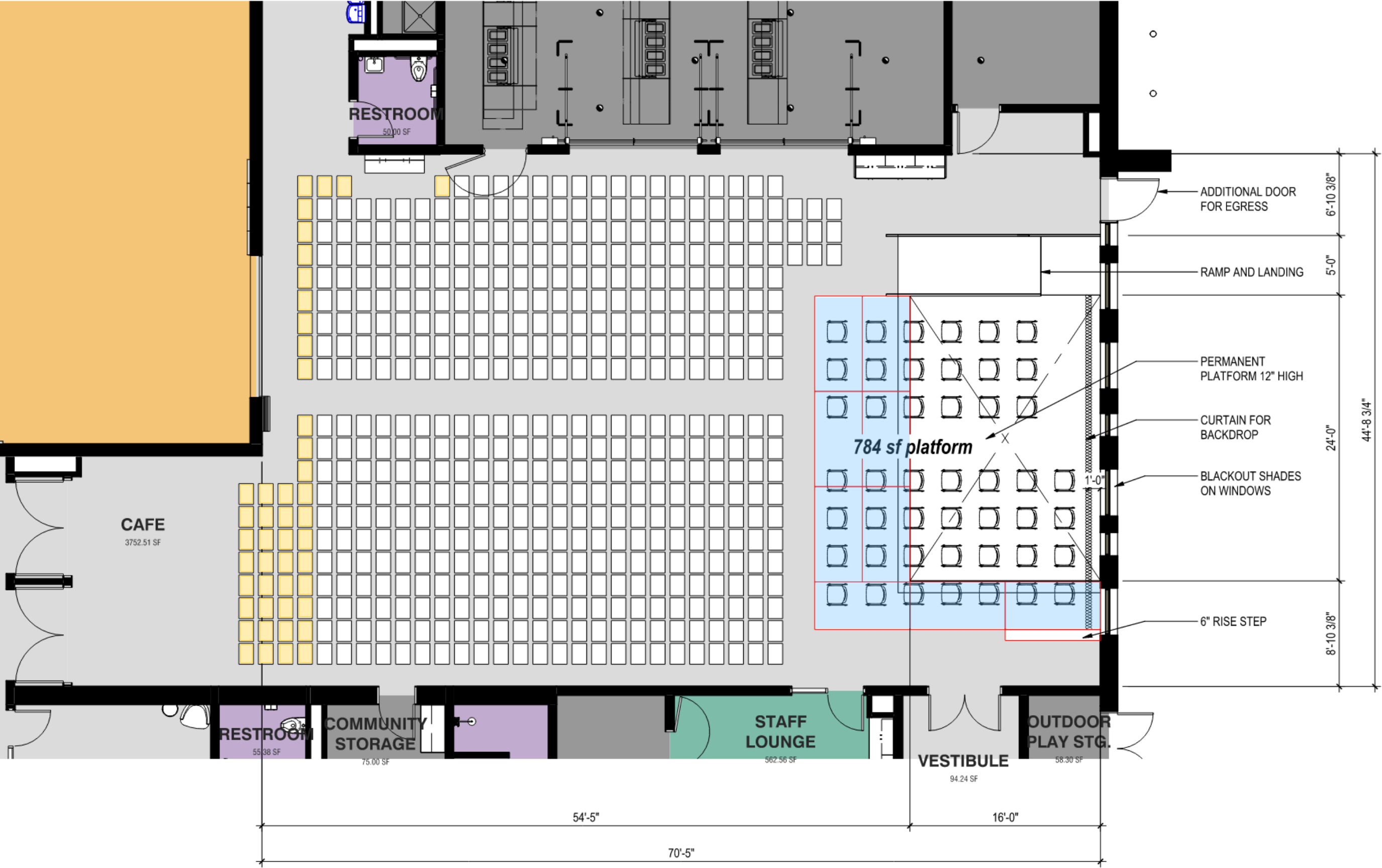


575 students are shown seated, with no other students on the 384 SF platform.

Highlighted students are those exceeding an enrollment of 528 students.



Café, Gathering Mode 2



529 students are shown seated with another 46 students performing on the extended 784 SF platform.

Thurston's existing stage is 734 SF (not including wings)

Café, Gathering Mode 2

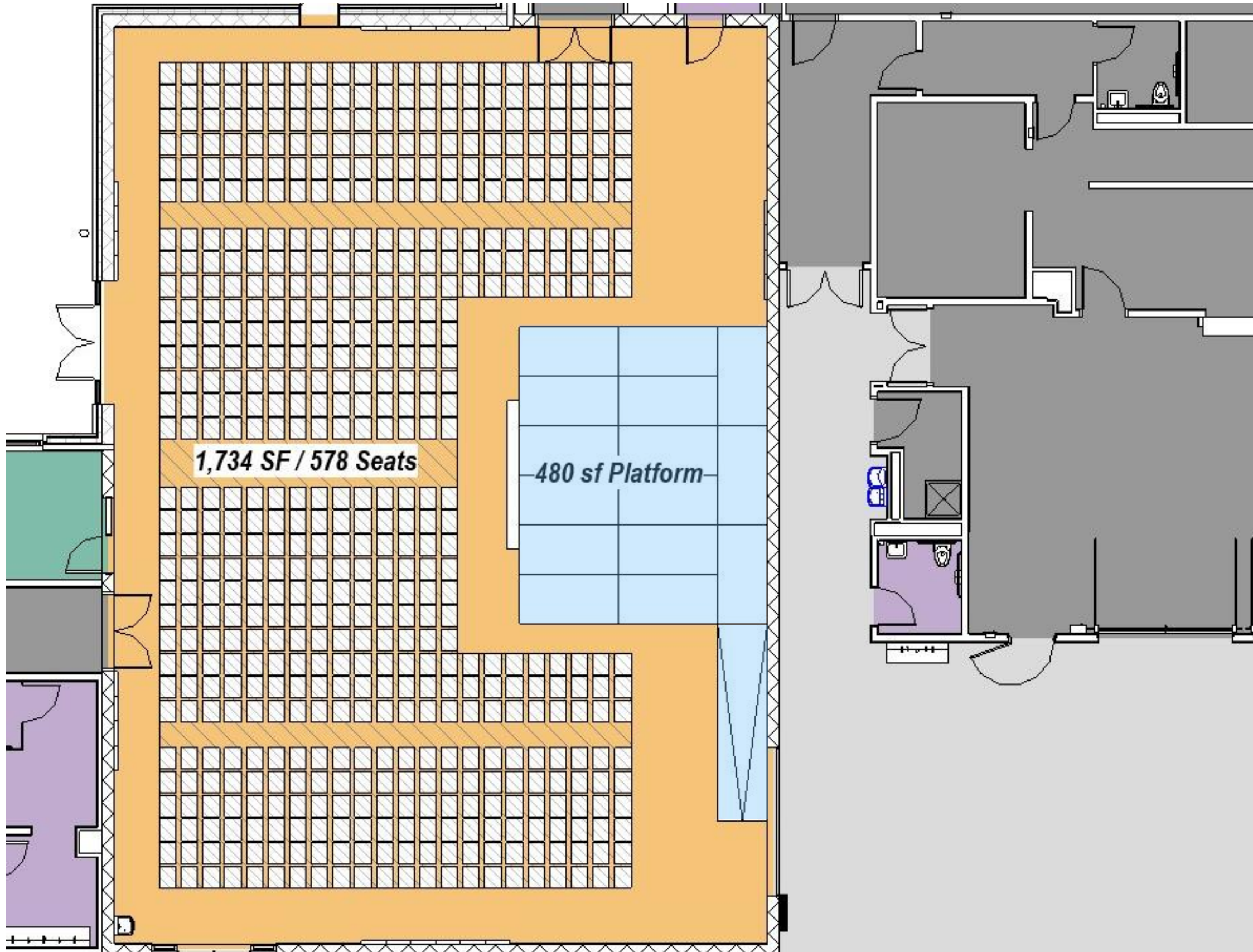


Café AV Systems

Café – Cafes will include a large venue video projector, wired and wireless microphone inputs, HDMI video input for video projector, two wireless microphones and a minimum of two wired microphones, a sound system rack with audio source equipment, digital signal processor/mixer, and audio amps as required.

Audio source equipment will include wired and wireless microphone inputs, media player with CD/Bluetooth/USB/SD/Aux & AM/FM tuner, audio from the video projector or video projector source, and an input from the paging & fire alarm system to duck audio during pages or fire alarm events.

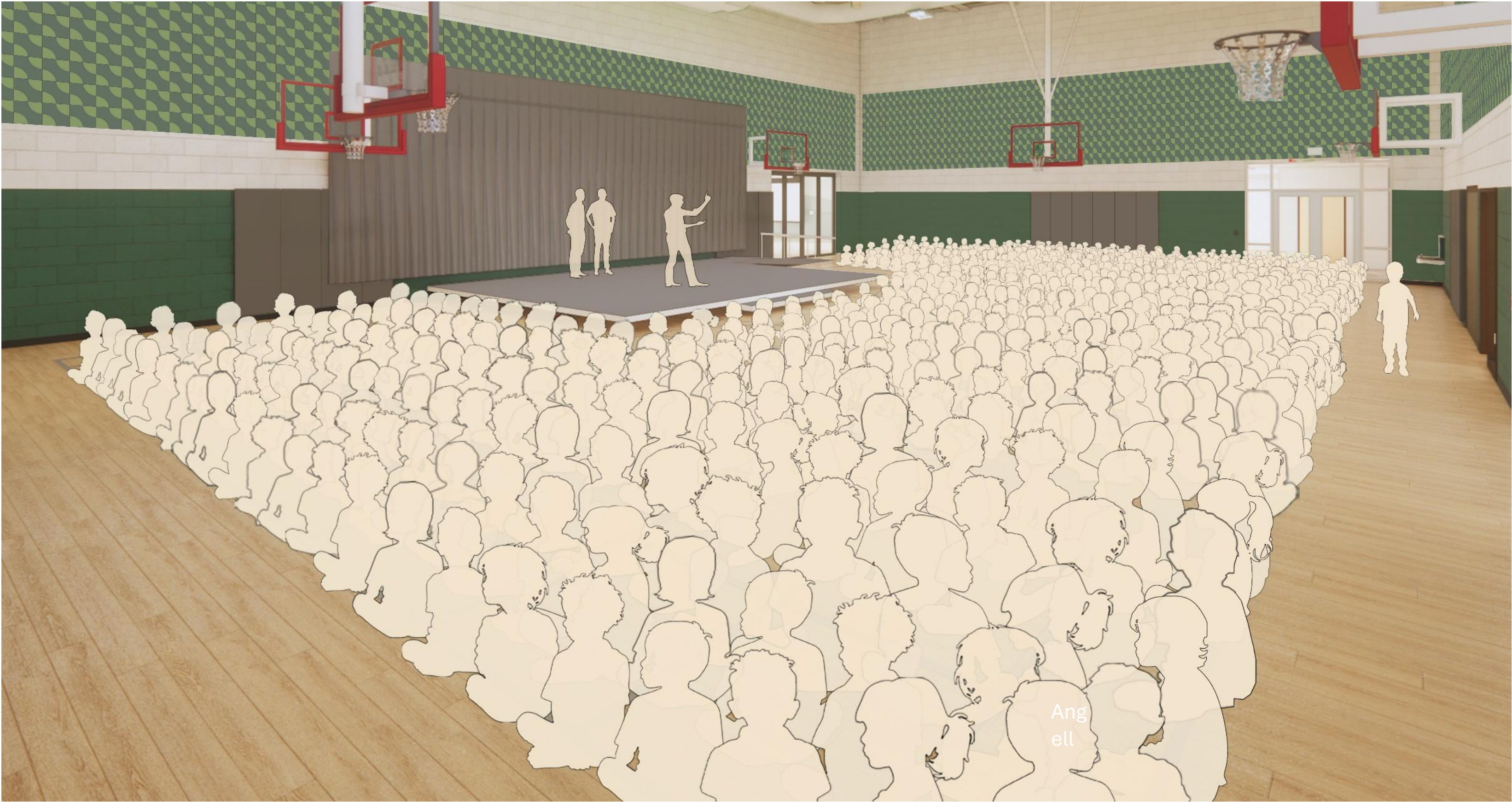
Gym, Gathering Mode



578 students are shown seated in the Gym with another 32 possible on the platform.

The Gym can accommodate any gathering and platform configuration the Café can accommodate, and more.

Gym, Gathering Mode



Gym AV Systems

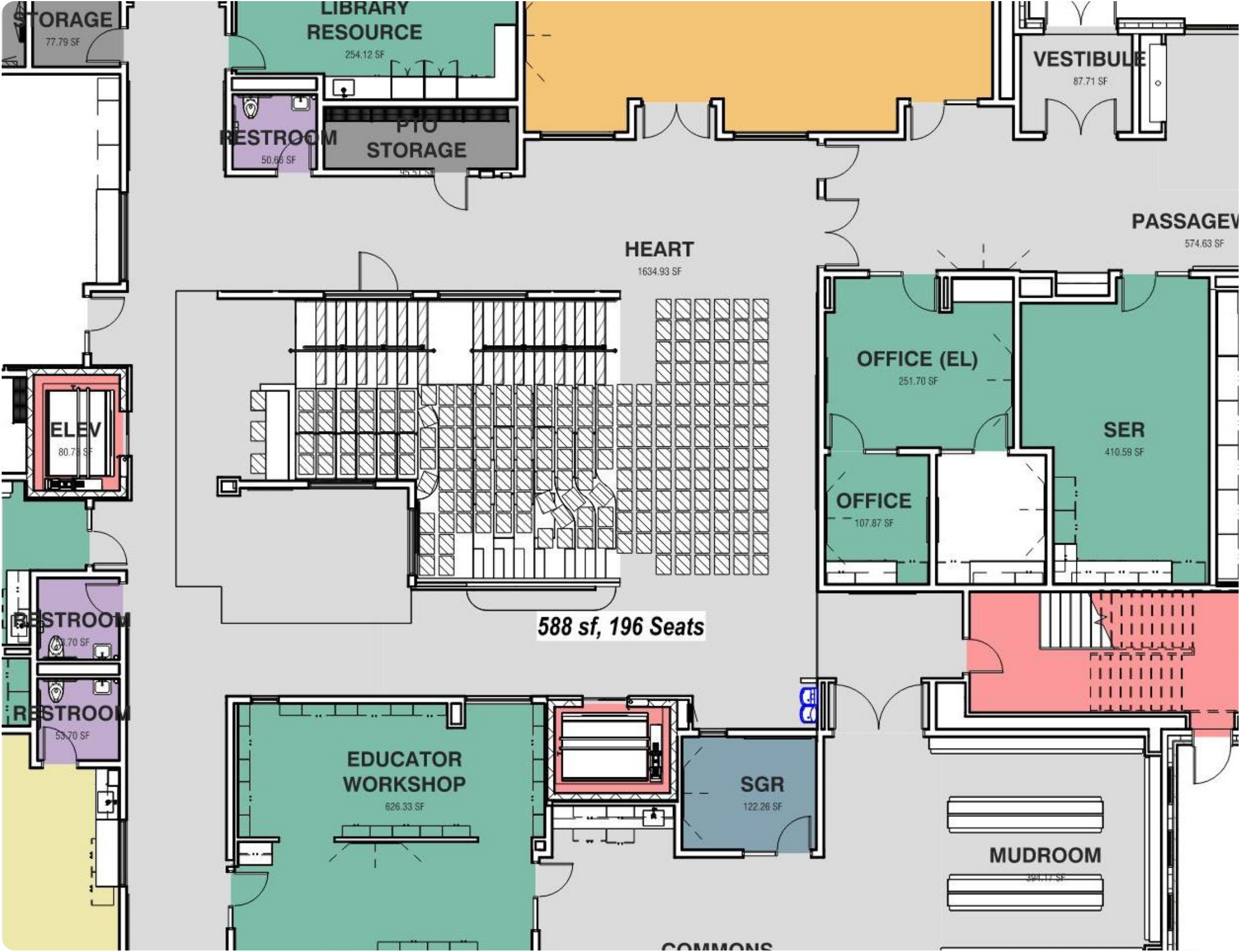
Gymnasium – the Gym will include two wireless microphones and a minimum of two wired inputs, a sound system rack with audio source equipment, digital signal processor/mixer and audio amps as required.

Audio source equipment shall include wired and wireless microphone inputs, media player with CD/Bluetooth/USB/SD/Aux & AM/FM tuner, and an input from the paging & fire alarm systems for audio ducking during events. An input in the Gym will be provided for a portable device/MP3 player to be connected to the system.

An HDTV cart will be assigned to the Gym. At the location the cart will generally be used provide a data drop.

Heart, Gathering Mode

196 students are shown seated. This is two full grade levels.



Heart, Gathering Mode



Heart AV Systems

Heart – a video wall or video projector will be provided for video content (large venue, short throw, etc.), dependent on the space configuration. An HDMI input will be provided for the video display system as well as a wired data port. A sound system will be provided with a wireless microphone and wired inputs. One wired input at the HDMI input location and one wired input located on the stair. A sound system rack will be provided with audio source equipment, digital signal processor/mixer, and audio amps

Audio source equipment shall include wired and wireless microphone inputs, media player with CD/Bluetooth/USB/SD/Aux & AM/FM tuner, audio from the video wall/projector source, and an input from the paging & fire alarm system to duck audio during pages or fire alarm events.

ANN ARBOR PUBLIC SCHOOLS
LEAD. CARE. INSPIRE.



K5 Specials Spaces

Specials in the AAPS's K5s

Category	Description
Library <i>(all day, every day)</i>	<p>A dedicated space with vetted resource storage. Designs permit multiple modalities, with flexible furniture, including stacks, and technology integration. Centralized location in the building.</p> <ul style="list-style-type: none"> • Includes an instructional function. • Spaces are engineered acoustically.
Gym <i>(all day, every day)</i>	<p>A shared space, equipped with appropriate amplified sound equipment. Includes space for Staff to supervise.</p> <ul style="list-style-type: none"> • Includes space for every student in the school to sit on the floor, accommodating the whole school. • Adaptable Platform Solutions in varying configurations are possible.
General Music <i>(all day, every day)</i>	<p>A dedicated space, intentionally designed. Location in the building is improved.</p> <ul style="list-style-type: none"> • Storage is improved and accessible from the Music Room. • Engineered reverberation and sound-attenuation measures are provided.
Art <i>(all day, every day)</i>	<p>A dedicated space, intentionally designed, with an adjacent kiln room, vetted resource storage, learning on display opportunities, and direct access to the exterior for outdoor learning opportunities. Location in the building is improved.</p> <ul style="list-style-type: none"> • For additional Art, one of two shared, 'Flex Specials' spaces, with flexible storage and clean-up sink is available. • Places to display artwork are prioritized.
Stage / Platform <i>(infrequent)</i>	<p>A fixed amenity typically located in the Café, designed to accommodate most gathering events. It is expandable for several other events with the use of Adaptable Platform Solutions.</p> <ul style="list-style-type: none"> • Today, stages are used for some Specials instruction, but new buildings designs will significantly reduce reliance on them for instruction with the provision of several Flex Specials spaces. These are covered on the next slide.

Specials in the AAPS's K5s (goal)

Category	Description
PLTW <i>(all day, every day)</i>	Now an intentionally designed Specials space. <ul style="list-style-type: none">• Water, power, and vetted material resource and students project storage are provided.• Places to display projects are prioritized.• Where possible, direct connections to the outdoors are provided.
Band and Orchestra <i>(half day, twice a week)</i>	Sharing two new 'Flex Specials' spaces <ul style="list-style-type: none">• With vetted storage accommodating maximum enrollment accessible nearby, designed to support student use.• Engineered reverberation and sound-attenuation measures are provided.
Other <i>(where applicable)</i>	Shared in one of the two new 'Flex Specials' spaces noted above. <ul style="list-style-type: none">• with flexible storage

The logo graphic for Ann Arbor Public Schools features a yellow rectangular frame. Inside the frame, the text "ANN ARBOR PUBLIC SCHOOLS" is written in white, uppercase, sans-serif font. Below it, the tagline "LEAD. CARE. INSPIRE." is written in a smaller, white, uppercase, sans-serif font. At the bottom of the frame, there are three colored squares: a blue square with a white star, a red square with a white heart, and a yellow square with a white exclamation mark.

ANN ARBOR PUBLIC SCHOOLS
LEAD. CARE. INSPIRE.

Plans for Improvements at Middle Schools

MS Music Improvements Under Consideration

Category	Improvements Under Consideration
MS Band, Orchestra, and Choir Rooms	<ul style="list-style-type: none">• Engineered acoustical solutions, encompassing background mechanical noise, reverberation, and sound transmission• Upgraded AV cabinets with accessible media cabinet within appropriate spaces• Purposeful instrument and storage, including lockable solutions• Flooring Improvements (recommended solution varies by space)• Lighting Improvements• Electrical Power improvements• Technology Upgrades• As appropriate, water source nearby or within the space• Where possible, fixed risers in Choir Rooms• New furniture, including mobile table and risers• Consideration given for similar Practice Room Improvements

MS Performance Upgrades Under Consideration

Category	Improvements Under Consideration
MS Auditoriums	<p>Upgrades under consideration include:</p> <ul style="list-style-type: none">• Loudspeaker Systems: Even speaker coverage over entire seating area.• Processing and Amplification Systems: Proper systems are included, with tamper-proof enclosures.• Mixing and Playback Systems: Medium-sized digital audio console, including level and equalization, available for every source in the system from within the seating area, with I/O headroom of 20%. Accommodation is made for playback from a portable PC and/or mobile device.• Production Intercom Systems: Analog production intercom system with connections at all technical crew positions.• Infrastructure: Adequate amount of and connectivity for microphone, line level, loudspeaker, shielded category cabling, and fiber optics to accommodate modern and future equipment needs.• Assistive Listening Systems: Robust coverage throughout the seating area, meeting ADA requirements.• Simple Use Systems: Control of the AV systems via a touch panel interface, requiring no interaction with system headend electronics. Touch panel allows control of a limited number of wireless microphones.• Video Presentation Systems: A motorized wide-screen aspect ratio projection screen, sized appropriately for the space, allowing good viewing to all seats. Screen and projector are both controllable from all operator positions.• Scenic Projection Systems: Connections are provided for a rented scenic projection system on an as-needed basis.• Technical Video Systems: A static video camera for monitoring of stage activity by stage management and from back-of-house and lobby systems. Additionally, an infrared static camera for stage monitoring during blackouts or dark conditions.• Stage Management Accommodations: Portable or fixed rack with lighting preset controls adjacent, video monitoring, paging controls, and intercom.• Recording and/or Streaming / Broadcasting Systems: Automated recording with ability for capture of a simple ‘content + people’ video layout.

MS Performance Upgrades Under Consideration

Category	Improvements Under Consideration
MS Auditoriums	<ul style="list-style-type: none">• Lobby AV Systems: Audio and video monitoring and paging provided to lobby spaces.• Back-of-House AV Systems: Audio and video monitoring and paging provided to dressing rooms (where applicable) and to a designated classroom used for backstage functions, with local control.• Stage Rigging Systems: Operable rigging sets for all stage electrics and for all other elements where there is sufficient clearance to fly curtains or scenery, with horizontally traversing rigging for elements that cannot be flown. Capacity shall be for all lighting, masking curtains, and other fixed loads plus 25% capacity in unassigned rigging sets for scenery and other production elements.• Stage Curtain Systems: Operable main curtain, full compliment of masking curtains with traveler curtains mid stage and upstage, and a cyclorama curtain. All curtain are inherently flame retardant.• Stage Lighting Systems: DMX-controlled switched power distribution system to all lighting positions. Lighting data network distributed to all lighting positions. Power and data network with sufficient capacity to support repertory lighting plot plus lighting for specific production needs. LED-based lighting inventory sufficient to support repertory lighting plot.• Stage Lighting Positions: Sufficient to provide front-light, top light, and back light to the entire performance area from appropriate angles, with the ability to create side lighting angles when needed. Lighting positions front-of-house sufficient to provide front-light and top light to the apron and downstage areas from appropriate angles. All lighting positions able to be accessed safely.• Architectural Lighting Systems: LED lighting fixtures for house and work lighting, all connected to central control system. Low-level pathway lighting for auditorium aisles. All lighting in audience dimmable 100% to 0%. Emergency transfer lighting system.• Acoustical Systems: Auditorium and performance area are outfitted with engineered acoustical solutions suitable for the purpose.• Stage Flooring: Where appropriate, new stage flooring will be provided.• Audience Seating: Functional, quiet, comfortable seating, harmonious with overall room design.• Accessibility: Audience accessible seating locations with vertical and horizontal distribution. Where possible, stage and backstage are accessible to all via pathway(s) that are equitable in distance and dignity. Where possible, control positions are accessible.

ANN ARBOR PUBLIC SCHOOLS
LEAD. CARE. INSPIRE.



Thank You!

For more information, please visit:
A2schoolsbond.org

