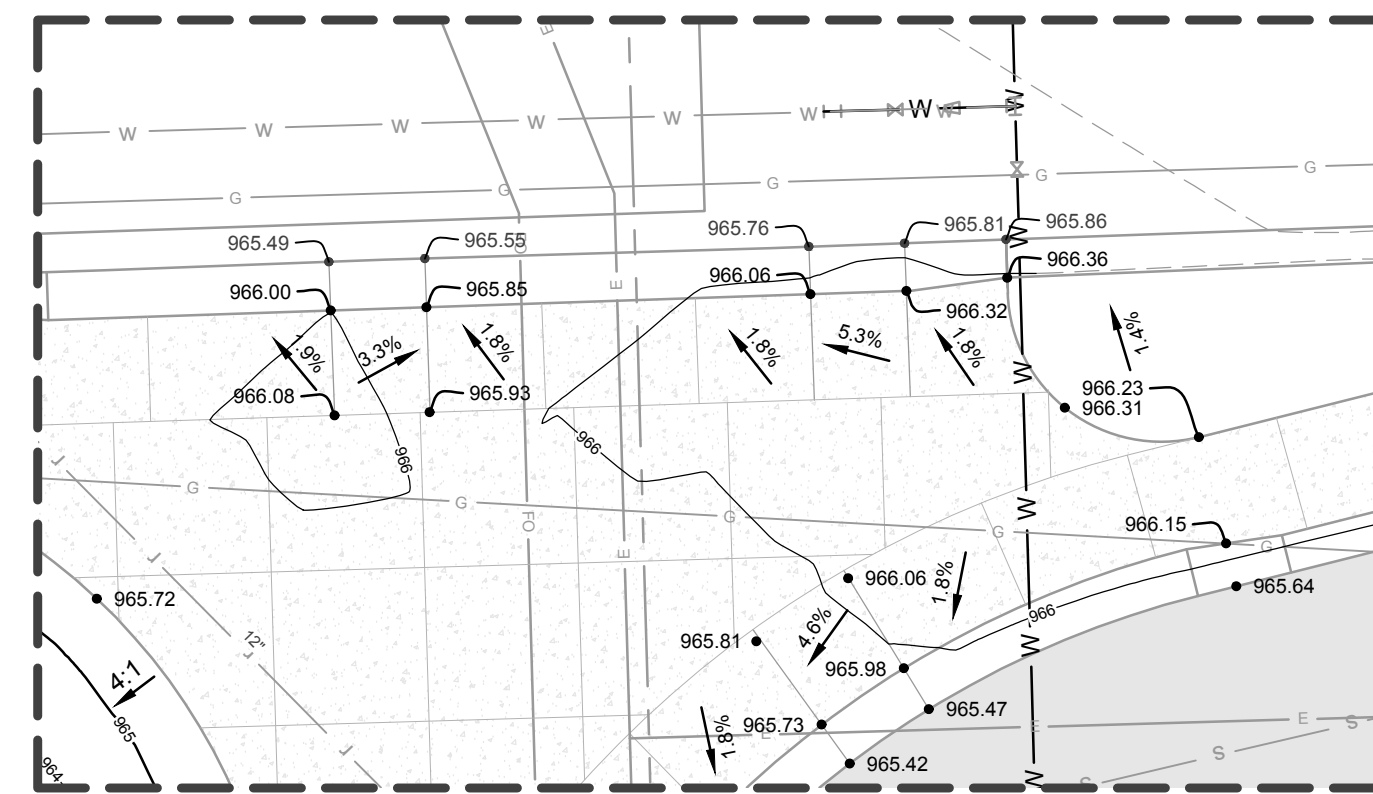
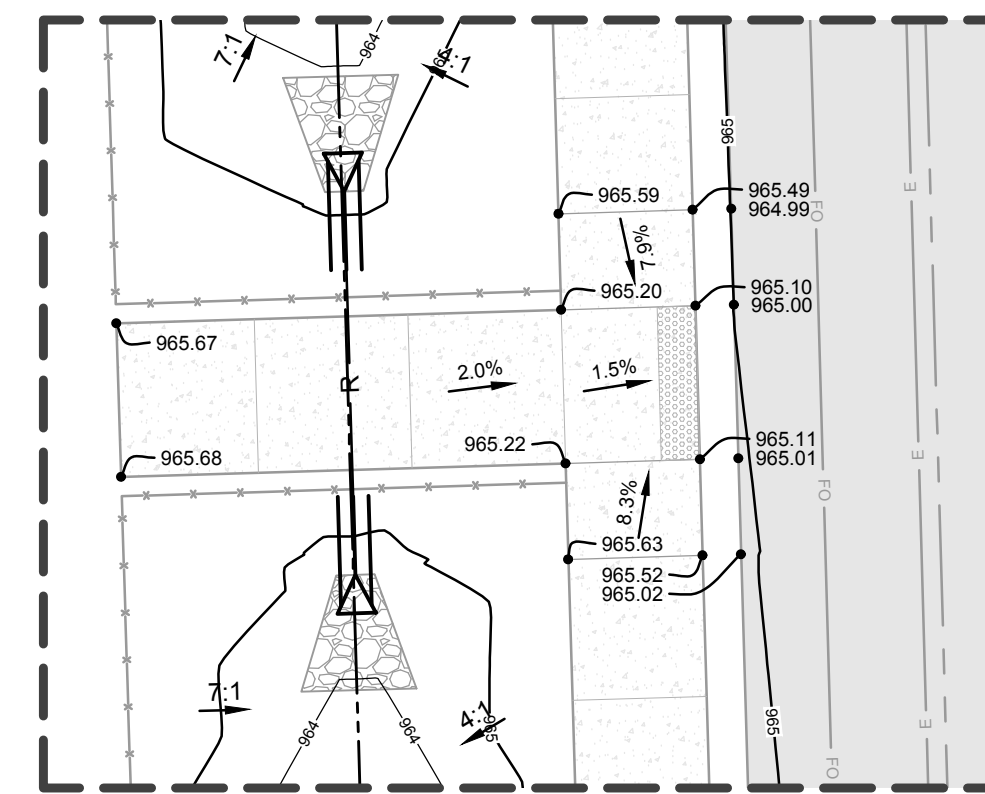


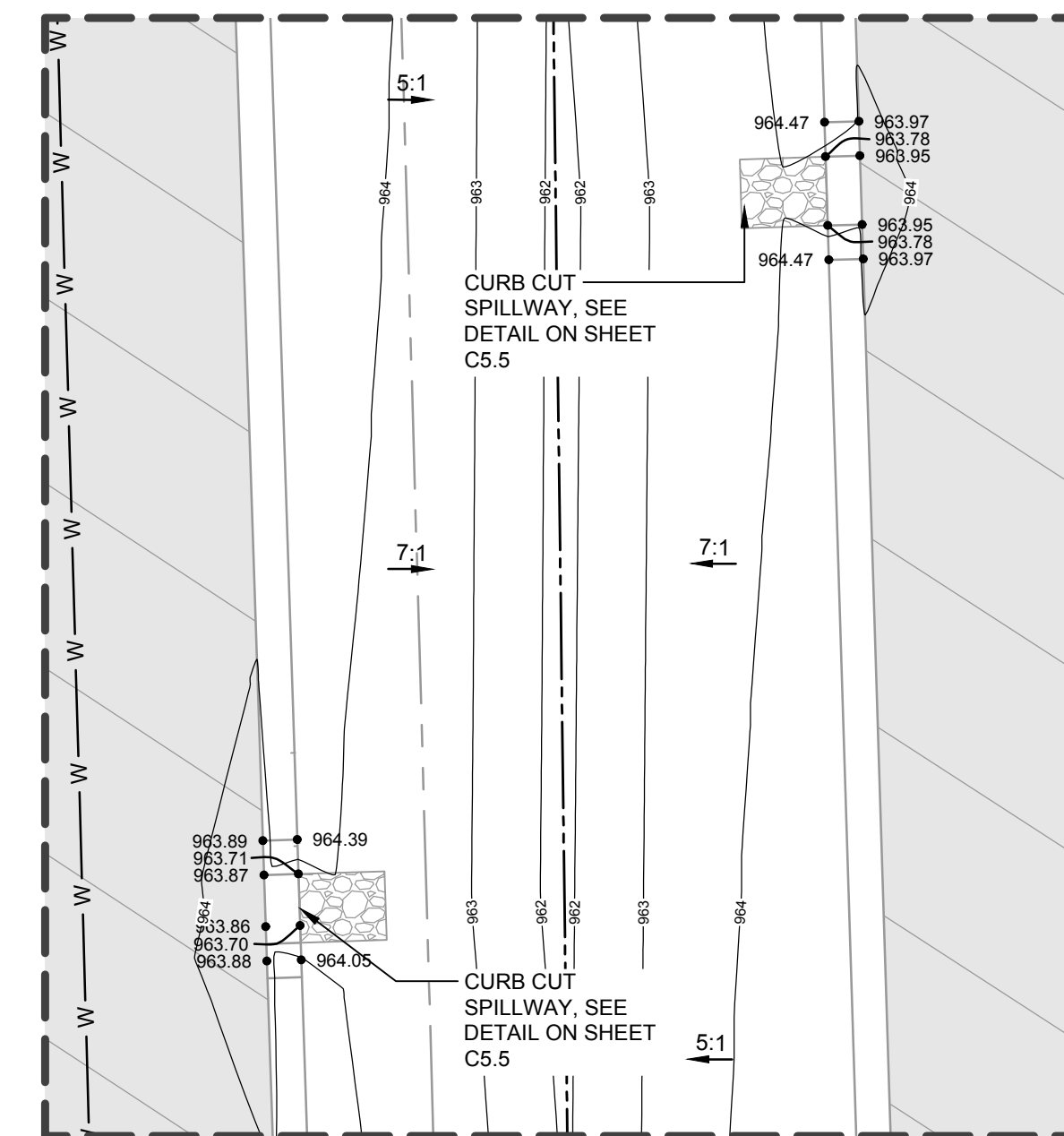
**GRADING DETAIL #1**  
SCALE: 1" = 10'



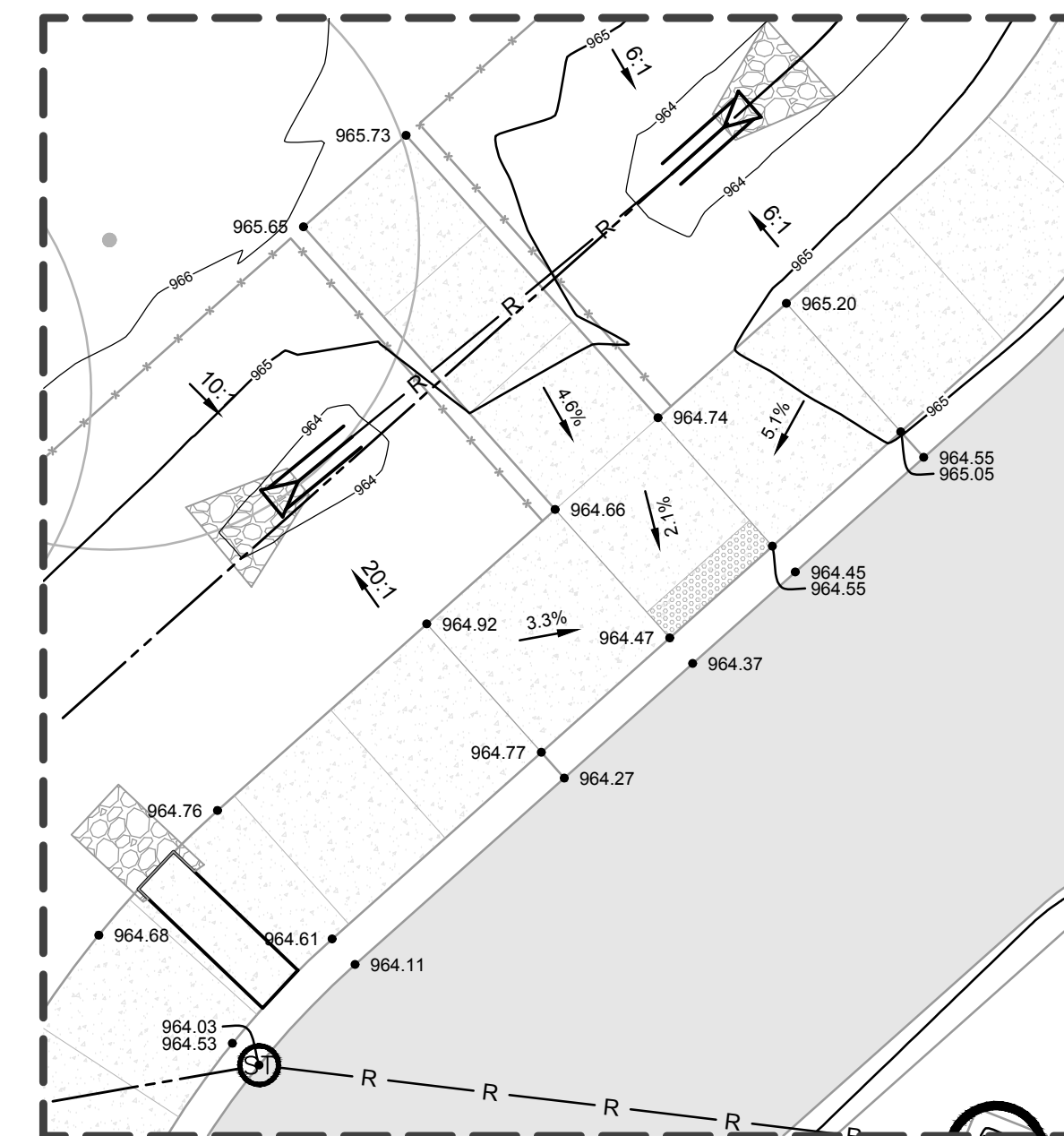
**GRADING DETAIL #2**  
SCALE: 1" = 10'



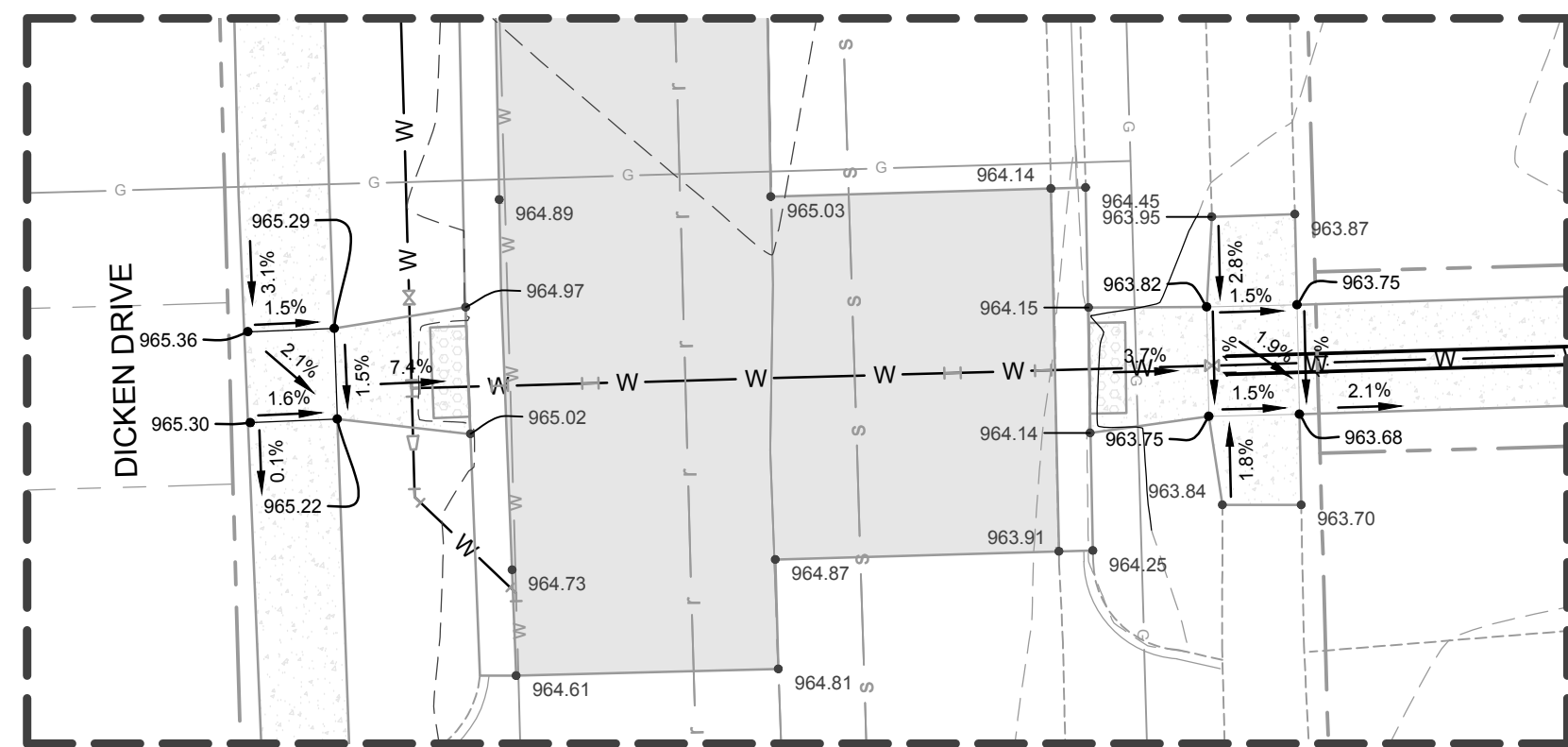
**GRADING DETAIL #3**  
SCALE: 1" = 10'



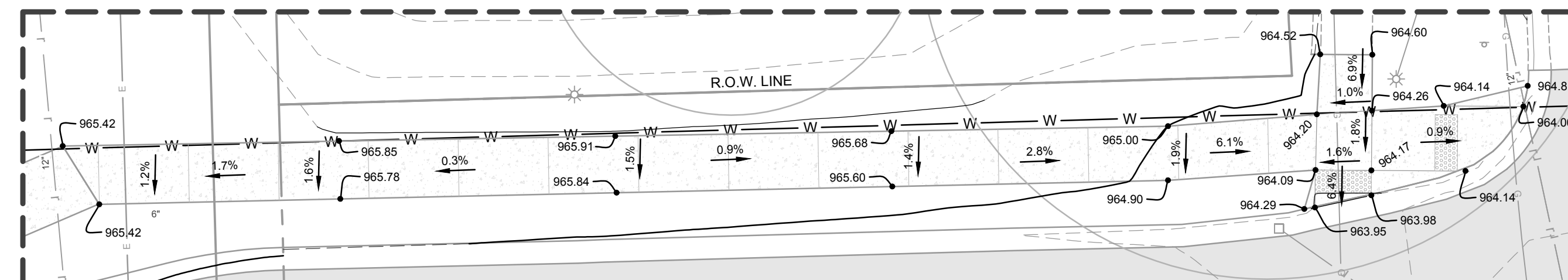
**GRADING DETAIL #4**  
SCALE: 1" = 10'



**GRADING DETAIL #5**  
SCALE: 1" = 10'



**GRADING DETAIL #6**  
SCALE: 1" = 10'

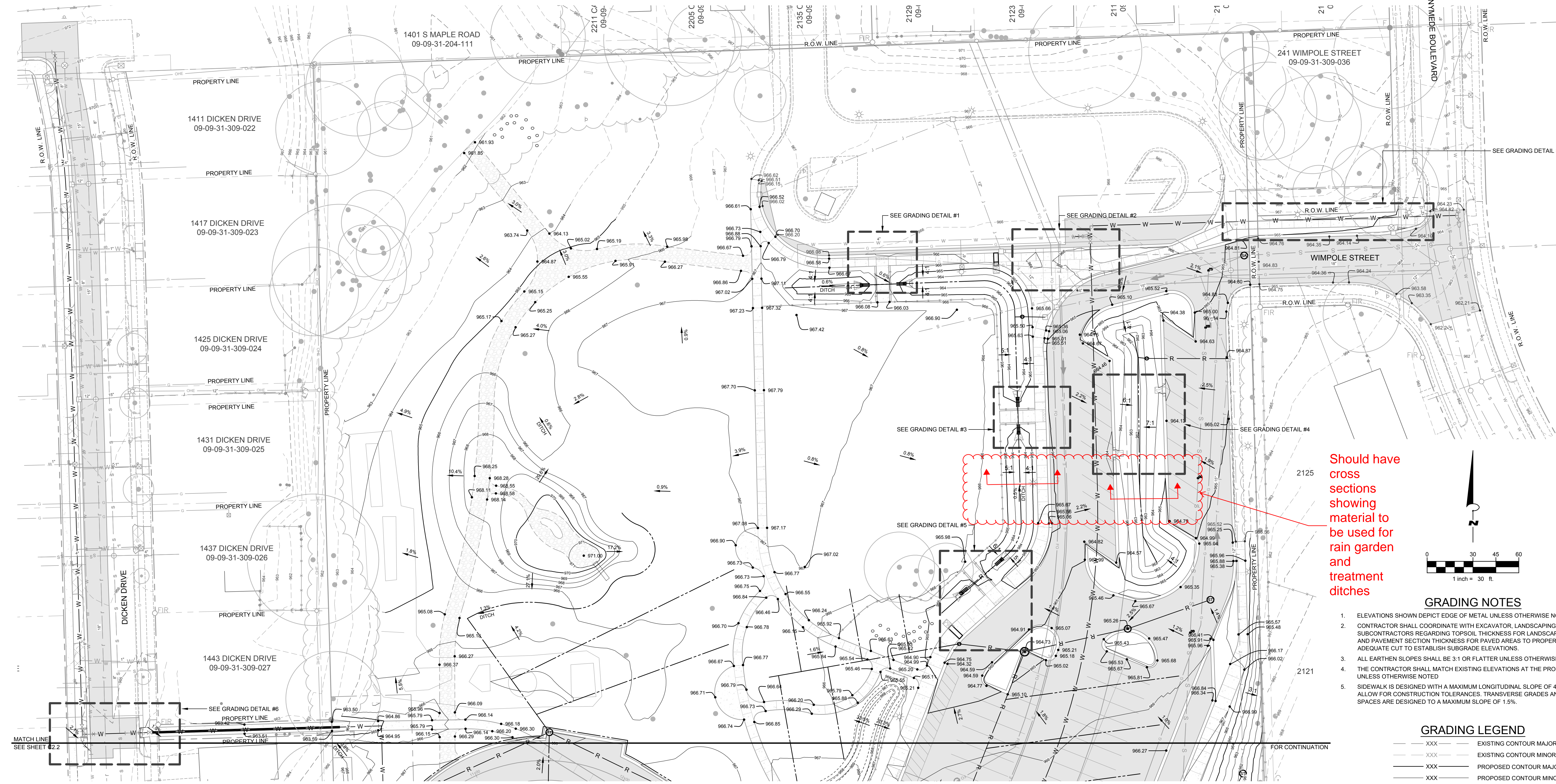


**GRADING DETAIL #7**  
SCALE: 1" = 10'

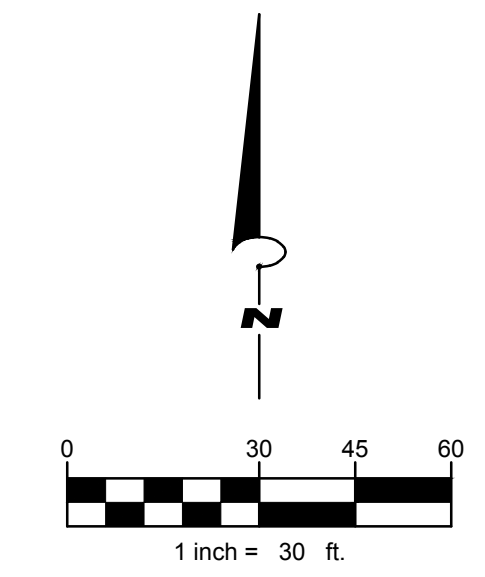
**LEGEND**

EXISTING	PROPOSED	DESCRIPTION
---	---	CABLE
---	---	ELECTRIC LINE (OVERHEAD)
---	---	FIBER OPTIC LINE
---	---	GAS LINE
---	---	TELEPHONE LINE
---	---	FENCE
---	---	FORCEMAIN
---	---	GUARDRAIL
---	---	SANITARY SEWER
---	---	STORM SEWER
---	---	WATER MAIN
---	---	CENTER LINE
---	---	EXISTING TREE LINE
---	---	EXISTING DITCH LINE
---	---	EASEMENT LINE/GRADING PERMIT
---	---	GRADING LIMITS/LIMITS OF DISTURBANCE
---	---	PROPERTY LINE
---	---	RIGHT-OF-WAY LINE
---	---	SECTION LINE
---	---	TO BE ABANDONED

⊠	= ANTENNA	⊠	= PAVEMENT/SOIL BORING
⊠	= CATCH BASIN	⊠	= PROPOSED HYDRANT
⊠	= CABLE RISER BOX	⊠	= PROPOSED GATE VALVE & BOX
⊠	= CLEAN OUT	⊠	= PROPOSED REDUCER
⊠	= CURB INLET	⊠	= PROPOSED SANITARY MANHOLE
⊠	= ELECTRIC MANHOLE	⊠	= PROPOSED STORM MANHOLE
⊠	= FIRE HYDRANT	⊠	= STORM MANHOLE
⊠	= FOUND IRON PIPE	⊠	= TELEPHONE MANHOLE
⊠	= GAS VALVE	⊠	= TELEPHONE RISER BOX
⊠	= GUY ANCHOR	⊠	= TURNING POINT/TRaverse
⊠	= LIGHT POLE	⊠	= MAILBOX
⊠	= MONITORING WELL	⊠	= VAULT
⊠	= POST	⊠	= WATER ELEVATION
⊠	= SATELLITE DISH	⊠	= WATER MANHOLE
⊠	= SANITARY MANHOLE	⊠	= WATER METER
⊠	= WATER VALVE	⊠	= SECTION CORNER
⊠	= SIGN	⊠	= WATER SPIGOT
⊠		⊠	= WELL



**GRADING PLAN NORTH**  
SCALE: 1" = 30'



**GRADING NOTES**

- ELEVATIONS SHOWN DEPICT EDGE OF METAL UNLESS OTHERWISE NOTED.
- CONTRACTOR SHALL COORDINATE WITH EXCAVATOR, LANDSCAPING, AND PAVING SUBCONTRACTORS REGARDING TOPSOIL THICKNESS FOR LANDSCAPE AREAS AND PAVEMENT SECTION THICKNESS FOR PAVED AREAS TO PROPERLY ENSURE ADEQUATE CUT TO ESTABLISH SUBGRADE ELEVATIONS.
- ALL EARTHEN SLOPES SHALL BE 3:1 OR FLATTER UNLESS OTHERWISE NOTED.
- THE CONTRACTOR SHALL MATCH EXISTING ELEVATIONS AT THE PROPERTY LIMITS UNLESS OTHERWISE NOTED.
- SIDEWALK IS DESIGNED WITH A MAXIMUM LONGITUDINAL SLOPE OF 4.8% TO ALLOW FOR CONSTRUCTION TOLERANCES. TRANSVERSE GRADES AND TURNING SPACES ARE DESIGNED TO A MAXIMUM SLOPE OF 1.5%.

**GRADING LEGEND**

---	EXISTING CONTOUR MAJOR
---	EXISTING CONTOUR MINOR
---	PROPOSED CONTOUR MAJOR
---	PROPOSED CONTOUR MINOR