

- LEGEND**
- 838 EXIST. CONTOUR
  - x 836.2 EXIST. SPOT ELEVATION
  - o- U.P. EXIST. UTILITY POLE
  - ⊠ ELEC. TRANSFORMER
  - ⊠ EXIST. AC UNIT
  - ⊠ EXIST. GENERATOR
  - ⊠ EXIST. OVERHEAD UTILITY LINE
  - ⊠ EXIST. LIGHT POLE
  - ⊠ EXIST. TELEPHONE LINE
  - ⊠ EXIST. ELECTRIC LINE
  - ⊠ EXIST. GAS LINE
  - ⊠ EXIST. GAS VALVE
  - ⊠ EXIST. WATER MAIN
  - ⊠ EXIST. HYDRANT
  - ⊠ EXIST. GATE VALVE IN BOX
  - ⊠ EXIST. GATE VALVE IN WELL
  - ⊠ EXIST. CURB STOP & BOX
  - ⊠ EXIST. STORM SEWER
  - ⊠ EXIST. CATCH BASIN OR INLET
  - ⊠ EXIST. BEEHIVE INLET
  - ⊠ END SECTION
- TREE LEGEND**
- A APPLE
  - B BASSWOOD
  - C BIRCH
  - E ELM
  - H HICKORY
  - L LOCUST
  - M MAPLE
  - O OAK
  - P PINE
  - S SPRUCE
  - SY SYCAMORE
- EXIST. DOWNSPOUT**
- EXIST. SANITARY SEWER**
- EXIST. CLEANOUT**
- SIGN**
- MAILBOX**
- TELEPHONE RISER**
- CABLE TELEVISION RISER**
- ELECTRIC METER**
- GAS METER**
- POST**
- FENCE**
- SINGLE TREE**
- TREE OR BRUSH LIMIT**
- SECTION CORNER**
- FOUND IRON PIPE**
- FOUND MONUMENT**
- FOUND IRON ROD**
- EXIST. FLAG POLE**

**TREE LIST**

TAG#/DBH	COMMON NAME	GENUS/SPECIES	STEMS	SCORE	LM	INV
883 16"	Blue Spruce	Picea pungens				
884 15"	Norway Spruce	Picea abies				
885 17"	Scotch Pine	Pinus sylvestris			X	
886 11"	Crab Apple	Malus coronaria				
887 9"	White Spruce	Picea glauca				
888 15"	Norway Maple	Acer platanoides				X
889 6"	Red Maple	Acer rubrum				
890 18"	Blue Spruce	Picea pungens			X	
891 13"	Blue Spruce	Picea pungens				
892 25"	N. Pin Oak	Quercus palustris			X	
893 13"	Weeping Cherry	Prunus subhirtella				
894 18"	Honey Locust	Gleditsia triacanthos			X	
895 14"	Honey Locust	Gleditsia triacanthos				
896 12"	Honey Locust	Gleditsia triacanthos				
897 11"	Honey Locust	Gleditsia triacanthos				
898 13"	Blue Spruce	Picea pungens				

899 15"	Norway Spruce	Picea abies				
900 13"	Black Walnut	Juglans nigra				
901 5"	Hawthorn	Crataegus				
902 8"	Hawthorn	Crataegus				
903 5"	Hawthorn	Crataegus				
904 4"	Hawthorn	Crataegus				
905 5"	Crab Apple	Malus coronaria				
906 5"	Hawthorn	Crataegus				
907 5"	Hawthorn	Crataegus				
908 6"	Hawthorn	Crataegus				
909 20"	Honey Locust	Gleditsia triacanthos			X	
910 18"	Honey Locust	Gleditsia triacanthos			X	
911 17"	Honey Locust	Gleditsia triacanthos			X	
912 17"	Shagbark Hickory	Carya ovata			X	
913 10"	Black Pine	Pinus nigra			X	
914 11"	Black Pine	Pinus nigra			X	
915 8"	Black Pine	Pinus nigra			X	
916 9"	Black Pine	Pinus nigra			X	
917 9"	Black Pine	Pinus nigra			X	
918 10"	Black Pine	Pinus nigra			X	
919 11"	Black Pine	Pinus nigra			X	
920 8"	Black Pine	Pinus nigra			X	
921 9"	Black Pine	Pinus nigra			X	
922 7"	Black Pine	Pinus nigra			X	
923 6"	Black Pine	Pinus nigra			X	
924 17"	Honey Locust	Gleditsia triacanthos			X	
925 15"	Honey Locust	Gleditsia triacanthos			X	
926 13"	Blue Spruce	Picea pungens			X	
927 22"	Blue Spruce	Picea pungens			X	
928 17"	Blue Spruce	Picea pungens			X	
929 24"	Honey Locust	Gleditsia triacanthos			X	
930 17"	Blue Spruce	Picea pungens			X	
931 16"	Blue Spruce	Picea pungens			X	
932 18"	Blue Spruce	Picea pungens			X	
933 20"	Blue Spruce	Picea pungens			X	
934 13"	Honey Locust	Gleditsia triacanthos			X	
935 19"	Honey Locust	Gleditsia triacanthos			X	
936 17"	Blue Spruce	Picea pungens			X	
937 17"	Blue Spruce	Picea pungens			X	
938 8"	Linden	Tilia americana			twin	X
939 5"	White Pine	Pinus strobus				X
940 5"	Linden	Tilia americana				X
941 7"	Common Juniper	Juniperus communis				X
942 22"	Honey Locust	Gleditsia triacanthos			X	
943 18"	Black Cherry	Prunus serotina			twin	X
944 17"	Black Cherry	Prunus serotina			twin	X
945 16"	Box Elder	Acer negundo			twin	X
946 10"	White Pine	Pinus strobus				X
947 11"	American Elm	Ulmus americana				X
948 23"	Black Cherry	Prunus serotina				X
949 21"	Bur Oak	Quercus macrocarpa				X
950 16"	Red Oak	Quercus rubra				X
951 13"	Bur Oak	Quercus macrocarpa				X
952 12"	Bur Oak	Quercus macrocarpa				X
953 13"	Bur Oak	Quercus macrocarpa				X
954 21"	Bur Oak	Quercus macrocarpa				X
955 14"	Bur Oak	Quercus macrocarpa				X
956 18"	Bur Oak	Quercus macrocarpa				X
957 12"	Black Cherry	Prunus serotina				X
958 20"	Blue Spruce	Picea pungens				X
959 18"	Bur Oak	Quercus macrocarpa				X
960 17"	Bur Oak	Quercus macrocarpa				X
961 22"	Bur Oak	Quercus macrocarpa				X
962 18"	Bur Oak	Quercus macrocarpa				X
963 16"	Bur Oak	Quercus macrocarpa				X
964 30"	Black Cherry	Prunus serotina				X
965 22"	Honey Locust	Gleditsia triacanthos				X
966 22"	Honey Locust	Gleditsia triacanthos				X
967 11"	White Pine	Pinus strobus				X
968 13"	Douglas-fir	Pseudotsuga menziesii				X
969 21"	Honey Locust	Gleditsia triacanthos				X
970 17"	Honey Locust	Gleditsia triacanthos				X
971 21"	Honey Locust	Gleditsia triacanthos				X
972 23"	Honey Locust	Gleditsia triacanthos				X
973 21"	Honey Locust	Gleditsia triacanthos				X
974 21"	Honey Locust	Gleditsia triacanthos				X
975 21"	Honey Locust	Gleditsia triacanthos				X
976 23"	Honey Locust	Gleditsia triacanthos				X
977 19"	Honey Locust	Gleditsia triacanthos				X
978 21"	Honey Locust	Gleditsia triacanthos				X
979 20"	Honey Locust	Gleditsia triacanthos				X
980 14"	Honey Locust	Gleditsia triacanthos				X
981 18"	Honey Locust	Gleditsia triacanthos				X
982 18"	Honey Locust	Gleditsia triacanthos				X
983 13"	Norway Spruce	Picea abies				X
984 20"	Blue Spruce	Picea pungens				X
985 20"	Blue Spruce	Picea pungens				X
986 16"	Blue Spruce	Picea pungens				X
987 23"	Blue Spruce	Picea pungens				X
988 23"	Blue Spruce	Picea pungens				X
989 18"	Honey Locust	Gleditsia triacanthos				X
990 14"	Honey Locust	Gleditsia triacanthos				X
991 17"	Honey Locust	Gleditsia triacanthos				X
992 20"	White Mulberry	Morus alba			twin	X
993 18"	Honey Locust	Gleditsia triacanthos				X
994 18"	Sugar Maple	Acer saccharum				X
995 23"	Sugar Maple	Acer saccharum				X

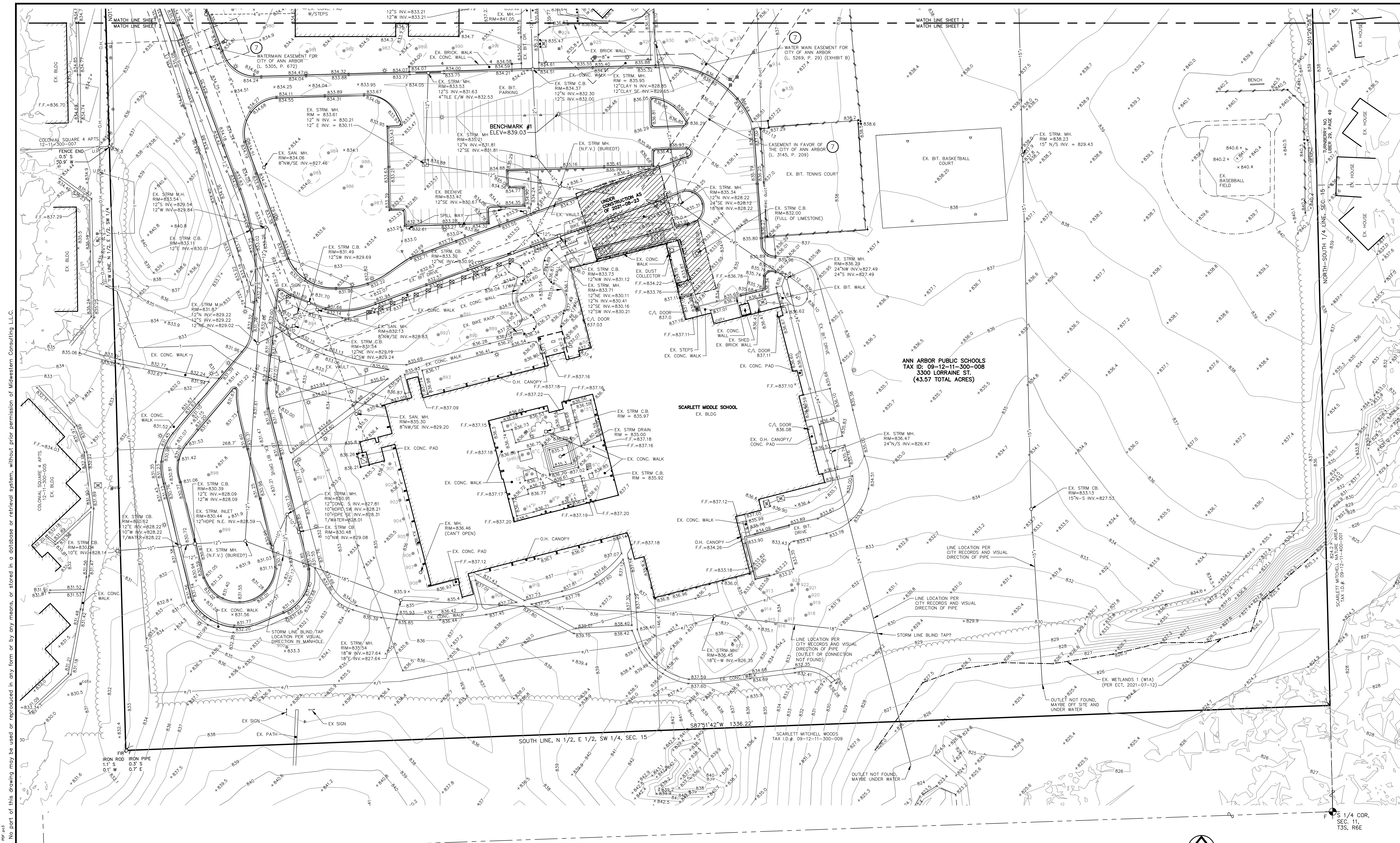
The underground utilities shown have been located from field survey information and existing records. The surveyor makes no guarantee that the underground utilities shown comprise all such utilities in the area, either in service or abandoned. The surveyor further does not warrant that the underground utilities shown are in the exact location indicated. Although the surveyor does certify that they are located as accurately as possible from the information available.

**MIDWESTERN CONSULTING**  
 3848 Plaza Drive, Ann Arbor, Michigan 48108  
 (734) 955-8000 • www.midwesternconsulting.com  
 Land Development • Land Survey • Institutional • Municipal  
 Wireless Communications • Transportation • Civil Services

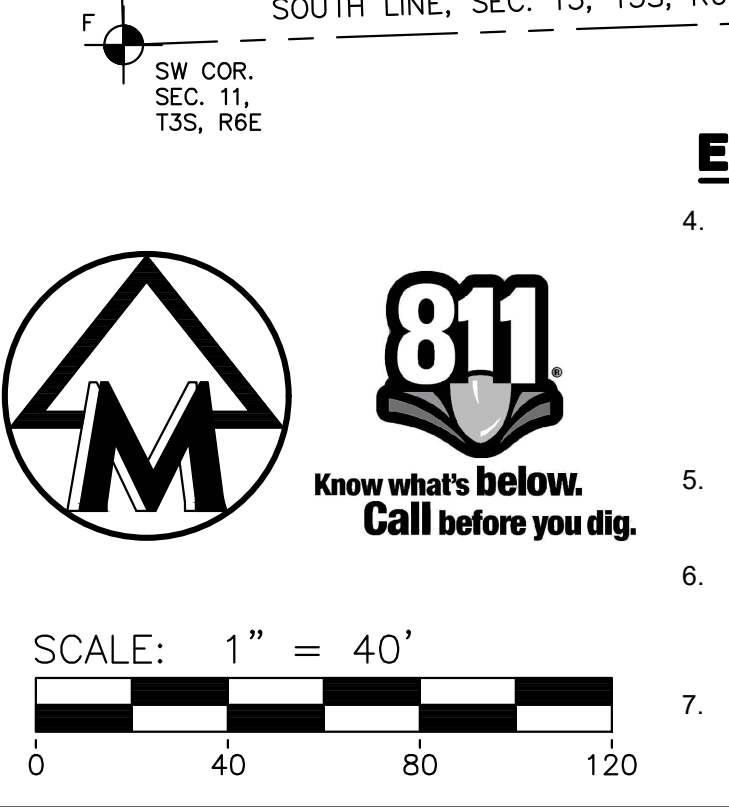
**CLIENT**  
 ANN ARBOR PUBLIC SCHOOLS  
 2855 SOUTH STATE STREET  
 ANN ARBOR, MI 48104  
 EMILY DAUZZANA  
 734-994-6118

**AAPS - SCARLETT & MITCHELL SCHOOLS**  
 ALTA/NSPS SURVEY OF A PARCEL OF LAND LOCATED IN THE SW 1/4 OF SECTION 11, T2S, R6E, CITY OF ANN ARBOR, WASHTENAW COUNTY, MICHIGAN

**21187**  
 DATE: 09-10-21  
 REV. DATE: 10-27-21  
 REVISIONS: CLIENT REVIEW & APPROVAL  
 ADD - L 4553, P. 265  
 WATER MAIN PROFILE - PART 5  
 EROSION CONTROL BANK



811 Know what's below. Call before you dig.



**EXCEPTIONS**

- BUILDING AND USE RESTRICTIONS CONTAINED IN INSTRUMENT RECORDED IN LIBER 394, PAGE 463, AS MODIFIED BY INSTRUMENTS RECORDED IN LIBER 1126, PAGE 205, LIBER 1295, PAGE 2, LIBER 1316, PAGE 503, LIBER 1359, PAGE 177, LIBER 1381, PAGES 342 AND 452, LIBER 1381, PAGE 340, AND LIBER 1385, PAGE 238 AND 240, WASHTENAW COUNTY RECORDS, BUT OMITTING ANY SUCH COVENANT OR RESTRICTION BASED ON RACE, COLOR, RELIGION, SEX, HANDICAP, FAMILIAL STATUS OR NATIONAL ORIGIN, (NOT PLOTTED).
- EASEMENT FOR PUBLIC UTILITIES AS DISCLOSED BY INSTRUMENT RECORDED IN LIBER 394, PAGE 463, WASHTENAW COUNTY RECORDS, (PLOTTED).
- GRANT IN FAVOR OF THE DETROIT EDISON COMPANY, AS RECORDED IN LIBER 436, PAGE 371, AND MODIFIED BY INSTRUMENT RECORDED IN LIBER 1191, PAGE 58, WASHTENAW COUNTY RECORDS, (PLOTTED).
- GRANT OF EASEMENT IN FAVOR OF THE CITY OF ANN ARBOR, AS RECORDED IN LIBER 3145, PAGE 209, LIBER 5269, PAGE 672, WASHTENAW COUNTY RECORDS, (PLOTTED).

**NOTES**

- THIS SURVEY WAS PREPARED USING ABSOLUTE TITLE, INC., FILE NO. 90680 WITH AN EFFECTIVE DATE OF MAY 4, 2021.
- THE LEGAL DESCRIPTION DESCRIBES THE SAME PROPERTY AS INSURED IN THE TITLE COMMITMENT AND ANY EXCEPTIONS HAVE BEEN NOTED HEREIN.
- BEARINGS ARE BASED ON GPS OBSERVATIONS.
- THERE IS NO OBSERVED EVIDENCE OF THIS BEING USED AS A SOLID WASTE DUMP, SUMP OR SANITARY LANDFILL.
- THERE IS NO OBSERVED EVIDENCE INDICATING ANY CEMETERIES ARE LOCATED ON THE PARCEL HEREIN DESCRIBED.
- THERE IS FOUND EVIDENCE OF CURRENT EARTH MOVING WORK, EVIDENCE OF BUILDING CONSTRUCTION OR BUILDING ADDITIONS, (SEE SHADED AREA).
- THE PROPERTY DESCRIBED HEREON LIES WITHIN ZONE "X" (AREA OF MINIMAL FLOOD HAZARD), PER FEDERAL EMERGENCY MANAGEMENT AGENCY (FEMA) COMMUNITY MAP #2616142, EFFECTIVE APRIL 3, 2012.
- THERE IS NO EVIDENCE OF PLOTTABLE OFFSITE EASEMENTS OR SERVICUTES, FOR THE PARCEL HEREIN DESCRIBED.
- THERE IS NO EVIDENCE OF PROPOSED ROAD RIGHT-OF-WAY CHANGES, FOR THE PARCEL HEREIN DESCRIBED.
- SITE ADDRESS: 3300 & 3550 LORRAINE STREET, ANN ARBOR, MI

**LEGAL DESCRIPTION**

(Per Absolute Title Inc., File No. 90680, effective date: May 4, 2021)

The North 1/2 of the East 1/2 of the Southwest 1/4 of Section 11, T3S, R6E, City of Ann Arbor, Washtenaw County, Michigan, Also Lot 68, except the North 66 feet thereof, and Lot 69, Freeman Estates, as recorded in Liber 10 of Plats, Page 20, Washtenaw County Records. Also the Westerly 33 feet of now vacated Pittsview Drive, lying south of Charing Cross Road and adjacent to Lots 68 and 69, of said Freeman Estates.

The above described parcel being more particularly described as:

Commencing at the West 1/4 corner of Section 11, Town 3 South, Range 6 East, City of Ann Arbor, Washtenaw County, Michigan, thence N 87°42'47" E 1342.23 feet along the East-West 1/4 line of said Section 11 to the POINT OF BEGINNING; thence N 01°11'13" W 155.86 feet along the Westerly line of Lots 68 and 69 of Freeman Estates, as recorded in Liber 10 of Plats, Page 20, Washtenaw County Records; thence N 88°19'16" E 682.98 feet along the Southerly right-of-way of Lorraine Street (66 feet wide); thence S 01°27'20" E 148.82 feet; thence N 87°42'47" E 675.79 feet along the East-West 1/4 line of said Section 11 to the Center of said Section 11, Town 3 South, Range 6 East, City of Ann Arbor, Washtenaw County, Michigan; thence S 01°29'58" E 1345.52 feet along the North-South 1/4 line of said Section 11; thence S 87°51'42" W 1336.22 feet along the South line of the North 1/2 of the East 1/2 of the Southwest 1/4 of said Section 11; thence N 01°33'07" W 1342.02 feet along the West line of the North 1/2 of the East 1/2 of the Southwest 1/4 of said Section 11 (as monumented) to the POINT OF BEGINNING. Being part of the Southwest 1/4 of the Section 11, Town 3 South, Range 6 East, City of Ann Arbor, Washtenaw County, Michigan and Lot 69, and part of Lot 68 of said Freeman Estates, and containing 43.57 acres, more or less. Subject to easements and restrictions of record, if any.

**BENCHMARKS**

BENCHMARK #1 - TOP OF CONCRETE BASE ON THE NORTH EDGE TO LIGHT POLE IN PARKING LOT AREA ±100' SOUTH OF MITCHELL ELEMENTARY SCHOOL BUILDING AND ±30' EAST OF THE ASPHALT DRIVE LEADING TO SCHOOL BUILDING. ELEV=839.03 (NAVD 88)

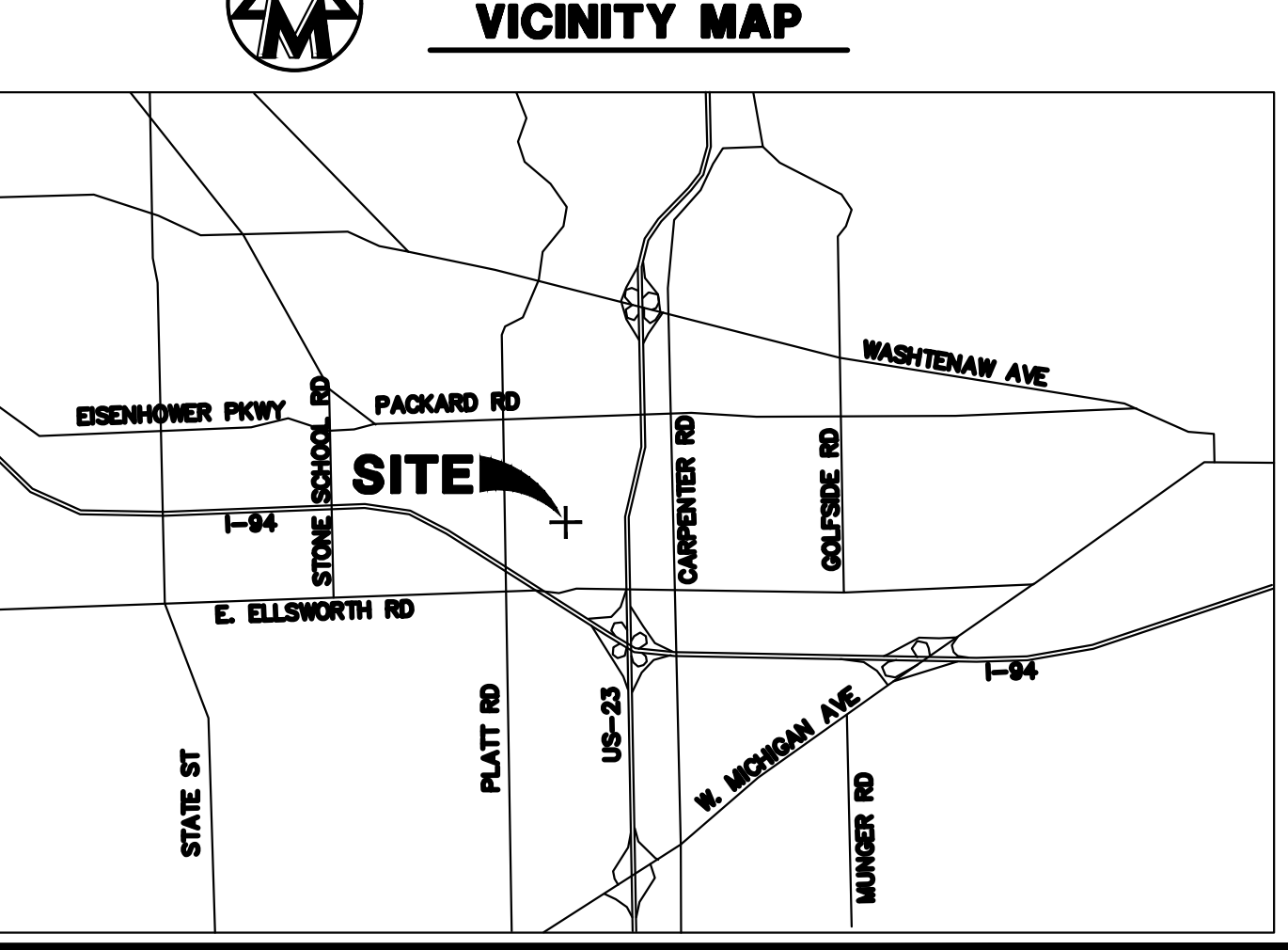
BENCHMARK #2 - TOP OF ARROW ON HYDRANT STANDING AT THE SW CORNER OF LORRAINE ST. AND PITTSVIEW DR. ELEV=838.93 (NAVD 88)

**SURVEYORS CERTIFICATE**

To: Public Schools of the City of Ann Arbor, a Michigan municipal corporation; Absolute Title, Inc.

This is to certify that this map or plat and the survey on which it is based were made in accordance with the 2021 Minimum Standard Detail Requirements for ALTA/NSPS Land Title Surveys, jointly established and adopted by ALTA and NSPS, and includes Items 2, 3, 4, 5, 8, 11, 13, 16, 17, 18, and 19 of Table A thereof. The fieldwork was completed on October 6, 2021.

MIDWESTERN CONSULTING, LLC  
 Mark Vander Veen, P.S. No. 4001056788  
 Date: October 27, 2021



DATE: 08-10-21  
 SHEET: 2 OF 2

REVISIONS:  
 10-27-21  
 03-12-24  
 04-15-24  
 04-15-24  
 05-22-24

JOB NO. 21187

REVISIONS:  
 10-27-21  
 03-12-24  
 04-15-24  
 04-15-24  
 05-22-24

REVISIONS:  
 10-27-21  
 03-12-24  
 04-15-24  
 04-15-24  
 05-22-24

REVISIONS:  
 10-27-21  
 03-12-24  
 04-15-24  
 04-15-24  
 05-22-24

REVISIONS:  
 10-27-21  
 03-12-24  
 04-15-24  
 04-15-24  
 05-22-24

REVISIONS:  
 10-27-21  
 03-12-24  
 04-15-24  
 04-15-24  
 05-22-24

REVISIONS:  
 10-27-21  
 03-12-24  
 04-15-24  
 04-15-24  
 05-22-24

REVISIONS:  
 10-27-21  
 03-12-24  
 04-15-24  
 04-15-24  
 05-22-24

REVISIONS:  
 10-27-21  
 03-12-24  
 04-15-24  
 04-15-24  
 05-22-24

REVISIONS:  
 10-27-21  
 03-12-24  
 04-15-24  
 04-15-24  
 05-22-24

REVISIONS:  
 10-27-21  
 03-12-24  
 04-15-24  
 04-15-24  
 05-22-24

REVISIONS:  
 10-27-21  
 03-12-24  
 04-15-24  
 04-15-24  
 05-22-24

REVISIONS:  
 10-27-21  
 03-12-24  
 04-15-24  
 04-15-24  
 05-22-24

REVISIONS:  
 10-27-21  
 03-12-24  
 04-15-24  
 04-15-24  
 05-22-24

REVISIONS:  
 10-27-21  
 03-12-24  
 04-15-24  
 04-15-24  
 05-22-24

REVISIONS:  
 10-27-21  
 03-12-24  
 04-15-24  
 04-15-24  
 05-22-24

REVISIONS:  
 10-27-21  
 03-12-24  
 04-15-24  
 04-15-24  
 05-22-24

REVISIONS:  
 10-27-21  
 03-12-24  
 04-15-24  
 04-15-24  
 05-22-24

REVISIONS:  
 10-27-21  
 03-12-24  
 04-15-24  
 04-15-24  
 05-22-24

REVISIONS:  
 10-27-21  
 03-12-24  
 04-15-24  
 04-15-24  
 05-22-24

REVISIONS:  
 10-27-21  
 03-12-24  
 04-15-24  
 04-15-24  
 05-22-24

REVISIONS:  
 10-27-21  
 03-12-24  
 04-15-24  
 04-15-24  
 05-22-24

REVISIONS:  
 10-27-21  
 03-12-24  
 04-15-24  
 04-15-24  
 05-22-24

REVISIONS:  
 10-27-21  
 03-12-24  
 04-15-24  
 04-15-24  
 05-22-24

REVISIONS:  
 10-27-21  
 03-12-24  
 04-15-24  
 04-15-24  
 05-22-24

REVISIONS:  
 10-27-21  
 03-12-24  
 04-15-24  
 04-15-24  
 05-22-24

REVISIONS:  
 10-27-21  
 03-12-24  
 04-15-24  
 04-15-24  
 05-22-24

REVISIONS:  
 10-27-21  
 03-12-24  
 04-15-24  
 04-15-24  
 05-22-24

REVISIONS:  
 10-27-21  
 03-12-24  
 04-15-24  
 04-15-24  
 05-22-24

REVISIONS:  
 10-27-21  
 03-12-24  
 04-15-24  
 04-15-24  
 05-22-24

REVISIONS:  
 10-27-21  
 03-12-24  
 04-15-24  
 04-15-24  
 05-22-24

REVISIONS:  
 10-27-21  
 03-12-24  
 04-15-24  
 04-15-24  
 05-22-24

REVISIONS:  
 10-27-21  
 03-12-24  
 04-15-24  
 04-15-24  
 05-22-24

REVISIONS:  
 10-27-21  
 03-12-24  
 04-15-24  
 04-15-24  
 05-22-24

REVISIONS:  
 10-27-21  
 03-12-24  
 04-15-24  
 04-15-24  
 05-22-24

REVISIONS:  
 10-27-21  
 03-12-24  
 04-15-24  
 04-15-24  
 05-22-24

REVISIONS:  
 10-27-21  
 03-12-24  
 04-15-24  
 04-15-24  
 05-22-24

REVISIONS:  
 10-27-21  
 03-12-24  
 04-15-24  
 04-15-24  
 05-22-24

REVISIONS:  
 10-27-21  
 03-12-24  
 04-15-24  
 04-15-24  
 05-22-24

REVISIONS:  
 10-27-21  
 03-12-24  
 04-15-24  
 04-15-24  
 05-22-24

REVISIONS:  
 10-27-21  
 03-12-24  
 04-15-24  
 04-15-24  
 05-22-24

REVISIONS:  
 10-27-21  
 03-12-24  
 04-15-24  
 04-15-24  
 05-22-24

REVISIONS:  
 10-27-21  
 03-12-24  
 04-15-24  
 04-15-24  
 05-22-24

REVISIONS:  
 10-27-21  
 03-12-24  
 04-15-24  
 04-15-24  
 05-22-24

REVISIONS:  
 10-27-21  
 03-12-24  
 04-15-24  
 04-15-24  
 05-22-24

REVISIONS:  
 10-27-21  
 03-12-24  
 04-15-24  
 04-15-24  
 05-22-24

REVISIONS:  
 10-27-21  
 03-12-24  
 04-15-24  
 04-15-24  
 05-22-24

REVISIONS:  
 10-27-21  
 03-12-24  
 04-15-24  
 04-15-24  
 05-22-24

REVISIONS:  
 10-27-21  
 03-12-24  
 04-15-24  
 04-15-24  
 05-22-24

REVISIONS:  
 10-27-21  
 03-12-24  
 04-15-24  
 04-15-24  
 05-22-24

REVISIONS:  
 10-27-21  
 03-12-24  
 04-15-24  
 04-15-24  
 05-22-24

REVISIONS:  
 10-27-21  
 03-12-24  
 04-15-24  
 04-15-24  
 05-22-24

REVISIONS:  
 10-27-21  
 03-12-24  
 04-15-24  
 04-15-24  
 05-22-24

REVISIONS:  
 10-27-21  
 03-12-24  
 04-15-24  
 04-15-24  
 05-22-24

REVISIONS:  
 10-27-21  
 03-12-24  
 04-15-24  
 04-15-24  
 05-22-24

REVISIONS:  
 10-27-21  
 03-12-24  
 04-15-24  
 04-15-24  
 05-22-24

REVISIONS:  
 10-27-21  
 03-12-24  
 04-15-24  
 04-15-24  
 05-22-24

REVISIONS:  
 10-27-21  
 03-12-24  
 04-15-24  
 04-15-24  
 05-22-24

REVISIONS:  
 10-27-21  
 03-12-24  
 04-15-24  
 04-15-24  
 05-22-24

REVISIONS:  
 10-27-21  
 03-12-24  
 04-15-24  
 04-15-24  
 05-22-24

REVISIONS:  
 10-27-21  
 03-12-24  
 04-15-24  
 04-15-24  
 05-22-24

REVISIONS:  
 10-27-21  
 03-12-24  
 04-15-24  
 04-15-24  
 05-22-24

REVISIONS:  
 10-27-21  
 03-12-24  
 04-15-24  
 04-15-24  
 05-22-24

REVISIONS:  
 10-27-21  
 03-12-24  
 04-15-24  
 04-15-24  
 05-22-24

REVISIONS:  
 10-27-21  
 03-12-24  
 04-15-24  
 04-15-24  
 05-22-24

REVISIONS:  
 10-27-21  
 03-12-24  
 04-15-24  
 04-15-24  
 05-22-24

REVISIONS:  
 10-27-21  
 03-12-24  
 04-15-24  
 04-15-24  
 05-22-24

REVISIONS:  
 10-27-21  
 03-12-24  
 04-15-24  
 04-15-24  
 05-22-24

REVISIONS:  
 10-27-21  
 03-12-24  
 04-15-24  
 04-15-24  
 05-22-24

REVISIONS:  
 10-27-21  
 03-12-24  
 04-15-24  
 04-15-24  
 05-22-24

REVISIONS:  
 10-27-21  
 03-12-24  
 04-15-24  
 04-15-24  
 05-22-24

REVISIONS:  
 10-27-21  
 03-12-24  
 04-15-24  
 04-15-24  
 05-22-24

REVISIONS:  
 10-27-21  
 03-12-24  
 04-15-24  
 04-15-24  
 05-22-24

REVISIONS:  
 10-27-21  
 03-12-24  
 04-15-24  
 04-15-24  
 05-22-24

REVISIONS:  
 10-27-21  
 03-12-24  
 04-15-24  
 04-15-24  
 05-22-24

REVISIONS:  
 10-27-21  
 03-12-24  
 04-15-24  
 04-15-24  
 05-22-24

REVISIONS:  
 10-27-21  
 03-12-24  
 04-15-24  
 04-15-24  
 05-22-24

REVISIONS:  
 10-27-21  
 03-12-24  
 04-15-24  
 04-15-24  
 05-22-24

REVISIONS:  
 10-27-21  
 03-12-24  
 04-15-24  
 04-15-24  
 05-22-24

REVISIONS:  
 10-27-21  
 03-12-24  
 04-15-24  
 04-15-24  
 05-22-24

REVISIONS:  
 10-27-21  
 03-12-24  
 04-15-24  
 04-15-24  
 05-22-24