

ANN ARBOR PUBLIC SCHOOLS
LEAD. CARE. INSPIRE.



ANN ARBOR PUBLIC SCHOOLS

Lakewood Elementary School Neighbor Update

2024

Bernerd Rice, Assistant Superintendent
Capital Programs and Physical Properties

Jason Bing, Director
Capital Programs

Stephanie Corona, Project Executive
Gilbane Building Company

Kevin Stansbury, Project Design Manager
Gilbane Building Company

AGENDA

Capital Program Background

- AAPS Capital Program and 2019 Bond Objectives
- Site-Related Commitments
- Phase 2 Capital Program Plan

Project Update

- Project Timeline
- 21st Century Schools
- Schematic Site Plans

Q/A

AAPS Capital Program – Objective



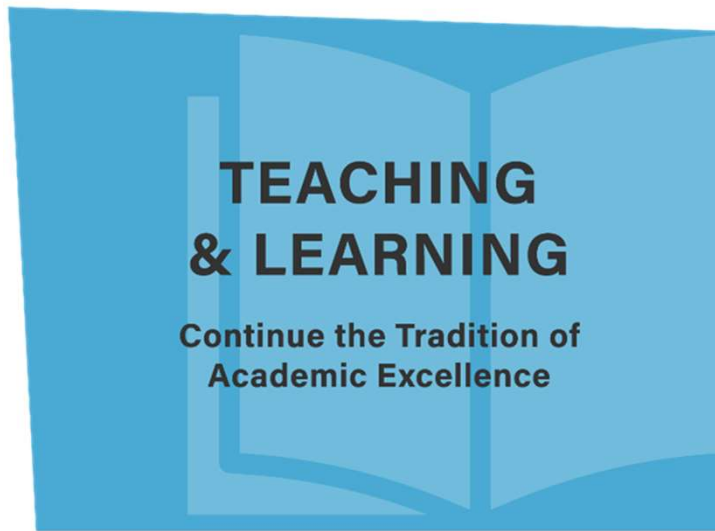
To transform the student learning experience with the goal of providing for the health, safety, and well-being **of all students** in high-quality, equitable, and environmentally sustainable schools

2019 Bond – Areas of Focus

2019 BOND PREPARING FOR THE FUTURE



2019 BOND - Renewal & Re-envision



- Upgrade classrooms and labs
- Improve natural light, air quality, sound
- Enhance performing arts spaces
- Replace musical instruments
- Add social / emotional support areas for counselors, nurses, tutors and speech therapists
- Create STEAM / Makerspace labs
- Address projected growth in student enrollment and overcrowding while maintaining class size
- Collaborative, project-based spaces in all schools
- Build upon long-standing environmental education program with new curricula and instructional models



2019 BOND - Renewal & Re-envision

- Add secure entry vestibules
- Upgrade surveillance cameras and access systems
- Ensure safe drinking water and air quality
- Cook healthy local food in the cafeterias
- Install school gardens
- Enhance playgrounds and athletic facilities
- Upgrade parking lots

SAFETY, HEALTH & WELL-BEING

**Focus on Development of
the Whole Child**

2019 BOND - Renewal & Re-envision

- Add new classroom devices / equipment to support curriculum goals
- Refresh devices and equipment to stay current over next 15-20 years
- Renovate media centers to support digital learning and collaboration
- Continue bus fleet replacement schedule reduce repair costs, stay up-to-date on efficiency improvements, and promote bus fleet safety
- Provide improved custodial, information technology, public address, and audio/visual support spaces

EFFICIENT & EFFECTIVE SUPPORT SYSTEMS & SERVICES

**Continue Technology &
Transportation Replacement and
Renewal**

2019 BOND - Renewal & Re-envision

SUSTAINABLE & ENVIRONMENTALLY RESPONSIBLE INFRASTRUCTURE

Create Resilient Schools
for Climate Change

- Prepare schools to adapt to climate change
- Chart a course for carbon neutrality
- Utilize interior and exterior finishes that are long-lasting and require minimal maintenance and replacement
- Install dimmable LED lighting
- Install renewable solar & geothermal energy sources
- Increase recycling and composting

Phase 2 Capital Program – Site-Related Goals

To ensure safe and secure schools as centers of the community

To prepare our schools to adapt to climate change and act as centers of neighborhood resiliency and, when feasible, to maintain critical life-support conditions in the event of extended power loss, heating fuel or water

To improve school grounds to provide separation of pedestrian, bicycle, car, and bus traffic

Phase 2 Capital Program – Site-Related Goals

To provide opportunities for all students to enjoy physical activity in formal and informal settings

To continue improvement of playgrounds; including age-appropriate equipment, ADA / universal design equipment, and spaces for unstructured, creative play

To continue improvement of sports fields and to repair and modernize playgrounds. To replace or improve elementary 'black top' spaces

Phase 2 Capital Program – Site-Related Goals

To provide opportunities for students to engage in on-site gardening and food production

To support construction and maintenance of school gardens that include a dedicated water source and outdoor shaded classrooms

To create bio-diverse ecologies on school grounds that support local ecosystems and manage storm water. Promote bio-diversity and healthy sites

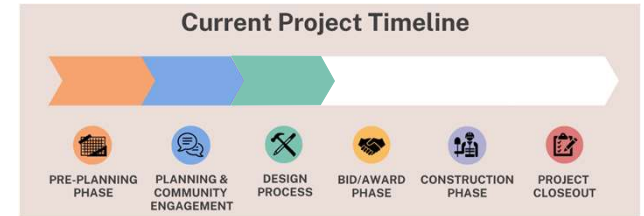


Phase 2 Capital Program Plan

School	Phase 1				Phase 2						Phase 3	
	2021	2022	2023	2024	2025	2026	2027	2028	2029	2030	2031/2040	
Pathways to Success (13)				Planning	New Construction (Staging Not Required)							
New Mitchell Elementary				Planning	New Construction (Staging Not Required)							
Dicken Elementary (3)				Planning	New Construction (Staging Not Required)							
New Logan Elementary (8)				Planning	New Construction (Staging Not Required)							
Thurston Elementary (18)				Planning	New Construction (Staging Not Required)							
Slauson Middle School (16)				Prep	Major Modernization (Staging Not Required)							
New Middle School Natatorium				Planning	New Construction							
Lakewood Elementary (9)				Planning	New Construction (Staging Not Required)							
New Lawton Elementary				Planning	New Construction (Staging Not Required)							
Old Mitchell Elementary (2)							Stages Prep	Stages Burns Park	Summer	Stages Angell	Summer	Stages Pittsfield
Burns Park Elementary (4)					Planning	Major Mod. (Stages at Old Mitchell or TBD)						
Old Logan Elementary (8)							Stages Prep	Stages King		Conversion to Preschool		
King Elementary (10)						Planning	New Construction (Stages at Old Logan)					
New Wines Elementary						Planning	New Construction (Staging Not Required)					
Angell Elementary (6)							Planning	Major Mod. (Stages at Old Mitchell or TBD)				



Timeline



Engagements began with the School Community to develop the Project Program. The process then moved through a phase where the Program has been translated into rough building blocks and vetted for conformity.

We are nearing the end of the Schematic Design.

Groundbreaking for New Lakewood is expected as early as Spring, 2026. The project is expected to be complete by Fall, 2028, after which Old Lakewood will be deconstructed and demolished.



21st Century Schools

New AAPS schools will be designed as human-centric 21st Century learning environments

These are agile learning environments which encourage exploration and collaboration, with ample support spaces

Schools continue to provide more space per student to improve how instruction is delivered and received

What are 21st-Century Schools?

They are state-of-the-art, student-centric, flexible, sustainable facilities, adding much needed support and break-out spaces.

Because of this, these buildings are roughly 12% larger than our existing schools are for the same enrollments.

Sites for these schools are expected to accommodate all daily parking and drop-off / pick-up traffic needs in addition to improved Outdoor Classrooms, play amenities, and Gardens.

LAKEWOOD



Lakewood – Schematic Site Plan

Building:

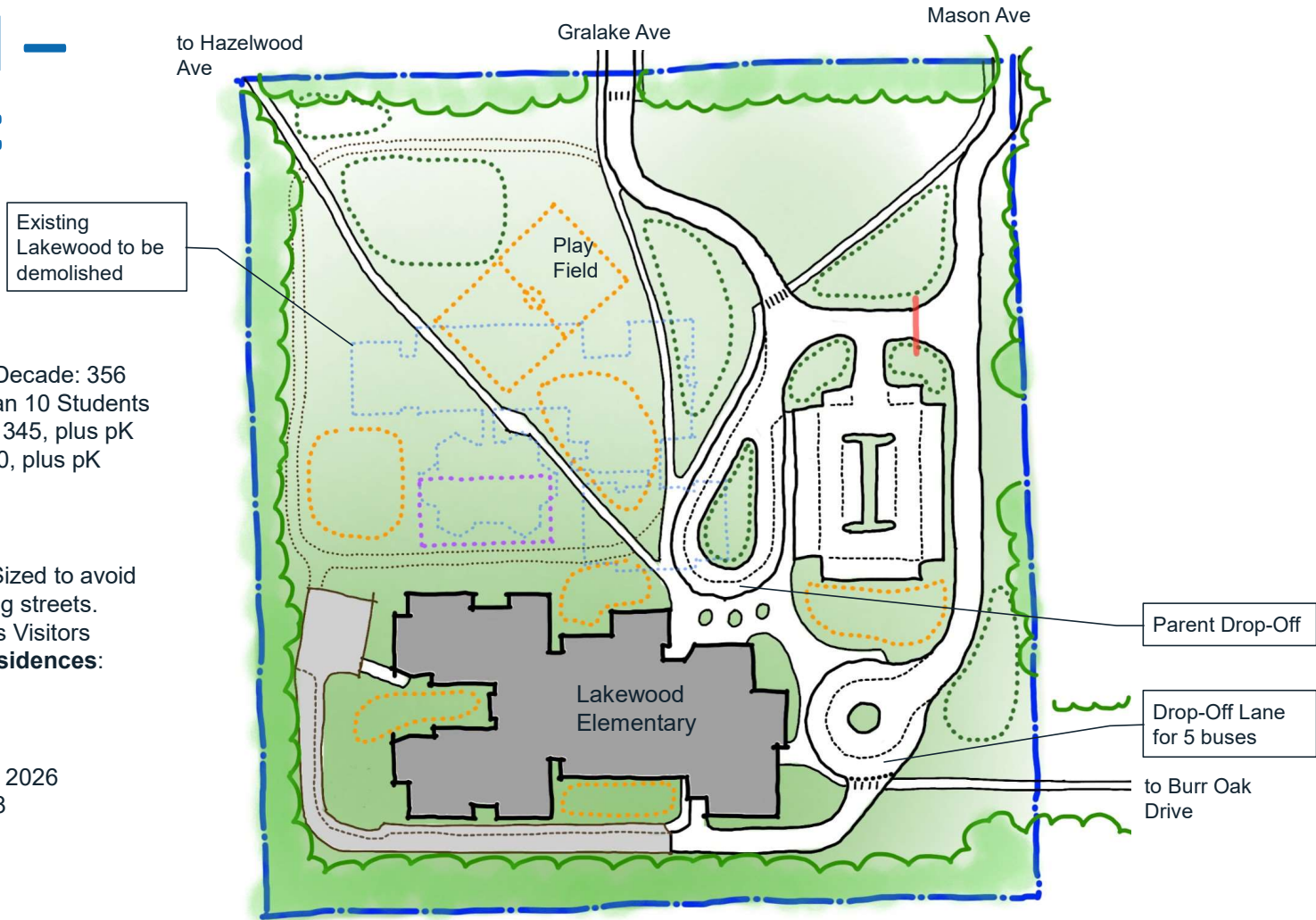
- **Present Enrollment:** 257
- **Max Enrollment in the Past Decade:** 356
- **Projected Growth:** Fewer than 10 Students
- **Target Design Enrollment:** 345, plus pK
- **Target Max Enrollment:** 420, plus pK
- **Number of Stories:** 2

Site:

- **On-Site Queuing Length:** Sized to avoid regular back-ups on adjoining streets.
- **Parking Capacity:** Staff plus Visitors
- **Setback from Adjacent Residences:** Exceeding 100'

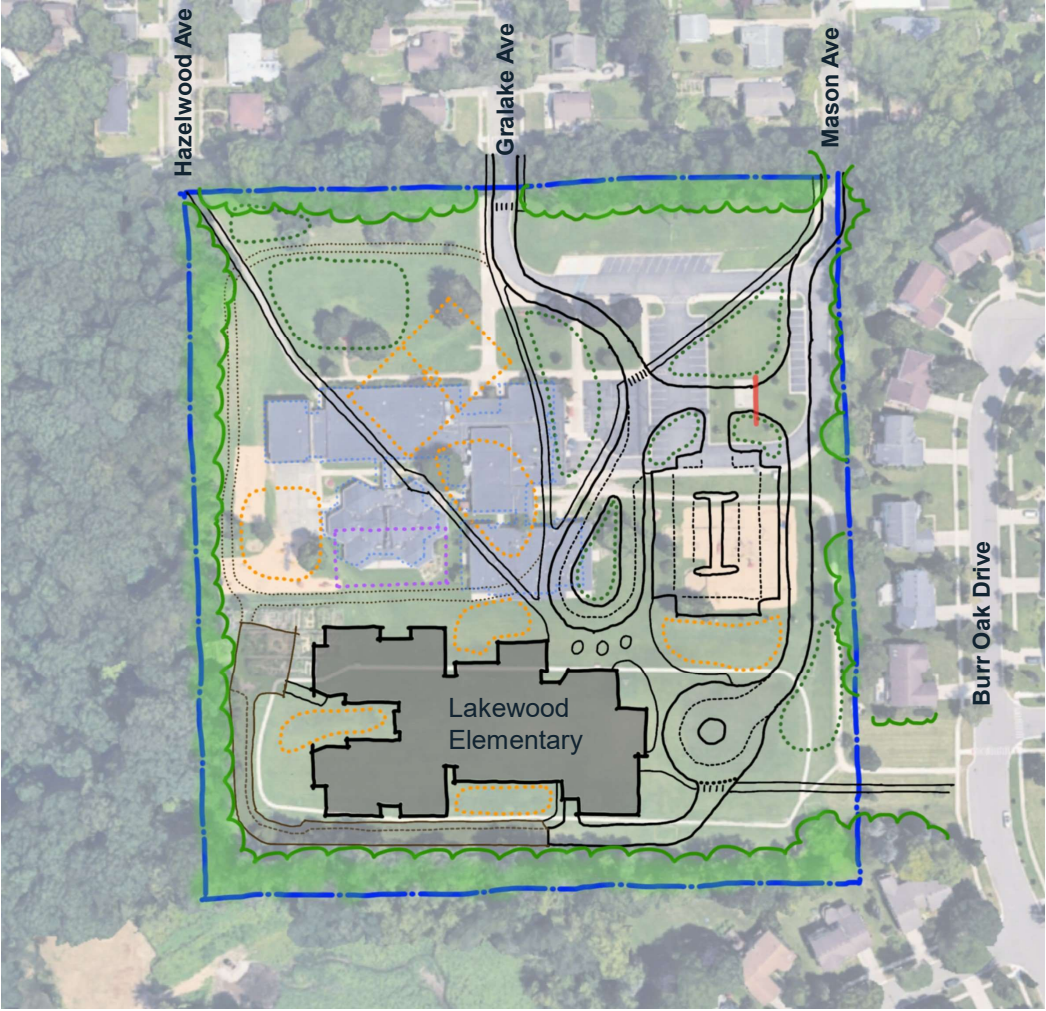
Timeline:

- **Construction Start:** Spring, 2026
- **Occupancy Date:** Fall, 2028



Lakewood – Schematic Site Plan Overlay

(added after the September 10th Presentation)



ANN ARBOR PUBLIC SCHOOLS
LEAD. CARE. INSPIRE.



Thank You!

Please visit the Bond Website or use this QR Code
to subscribe for regular updates

<https://a2schoolsbond.org>

